

目 录

产品安装指南.....	1
硬件连接.....	1
软件安装.....	2
软件使用说明.....	5
从扫描源获取图片.....	6
从拍摄仪获取图片.....	6
软件高级属性页.....	8
开启拍摄时文字识别功能.....	9
图像压缩率调整.....	9
图像实时预览.....	9
全屏模式.....	9
文件命名规则设置.....	10
连续拍摄.....	11
当次文件拍摄列表.....	11
导入导出.....	11
对已有图片进行OCR识别.....	11
将已有图片导出到PDF.....	13
网络接口访问.....	14
多视图浏览.....	14
技术规格.....	17

产品安装指南

硬件连接

本产品由通用串行总线端口（USB）与计算机连接，由通用串行总线端口（USB）与计算机连接。

在随机配件中会有USB数据线，将计算机打开，USB数据线的一端连接到拍摄仪产品上的USB接口上，另一端连接到计算机的USB接口，连接完成后，系统会自动找到新的硬件设备。注意：请确保计算机的USB接口能正常使用，并且是USB2.0接口，否则可能会导致设备不能正常使用。

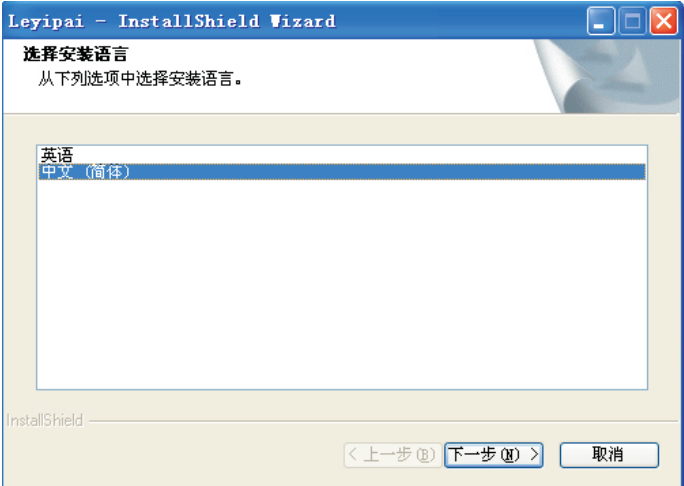
如果找不到计算机的USB端口，请参阅您计算机的使用手册



注意：图片中拍摄仪产品是示意图，具体产品以实物产品为准

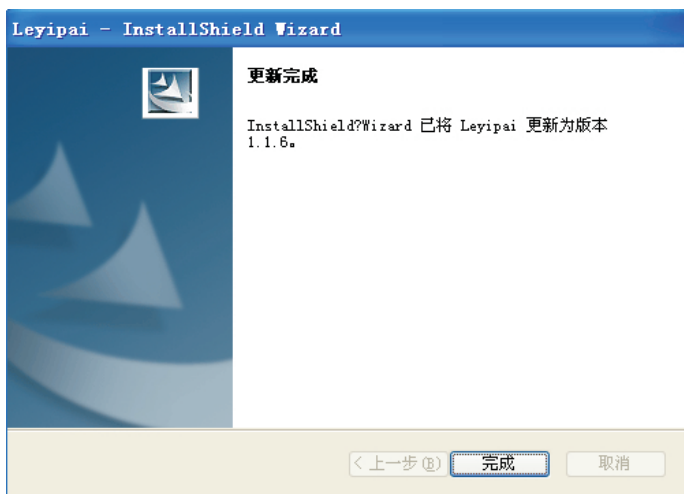
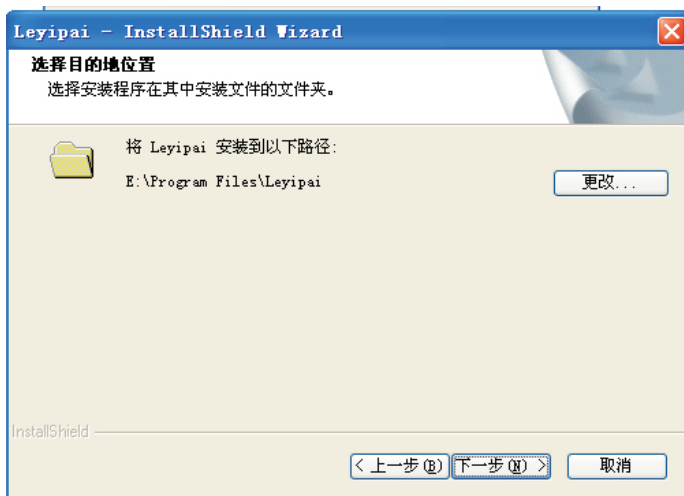
软件安装

所有软件安装至您的计算机大约需要300 MB的硬盘空间。为了确保足够的安装空间，及您能够扫描和保存较多的图形文件，推荐最低硬盘空间为1 GB。在附件中会有一张光盘，自动运行光盘后，会弹出安装界面，选择拍摄仪软件进行安装，出现如下界面



选择相应的语言进行安装，默认是中文（简体），然后点击“下一步”，按提示进行操作，一般默认即可。





点击“完成”后，程序会自动弹出“配置Leyipai CapturePro View片查看器”提示窗口，可以选择使用软件自带的图片查看器作为图片浏览工具，如不使用该查看器作为默认查看器，则直接选择最下面的选项按钮，然后点击确定按钮，安装完成。



注意：如软件版本已经变更，请以该版本软件的实际操作为准。

软件使用说明

本软件功能区域提供了大量一键式按钮，根据所需要的操作，选择相应的功能按钮，根据使用向导，就可以很轻松的完成操作，软件主界面的说明图示如下：





以上为软件的主工具栏，主要包括：

- 1、从扫描源获取图像
- 2、导出图像
 - a) 导出图像到文本（OCR识别）
 - b) 导出图像到PDF
 - c) 导出图像到多页TIFF
 - d) 导出图像到默认的Email工具
 - e) 导出图片到网络端空间
- 3、幻灯浏览及打印
 - a) 多种规格模板打印
 - b) 幻灯播放
- 4、软件主界面浏览方式选择

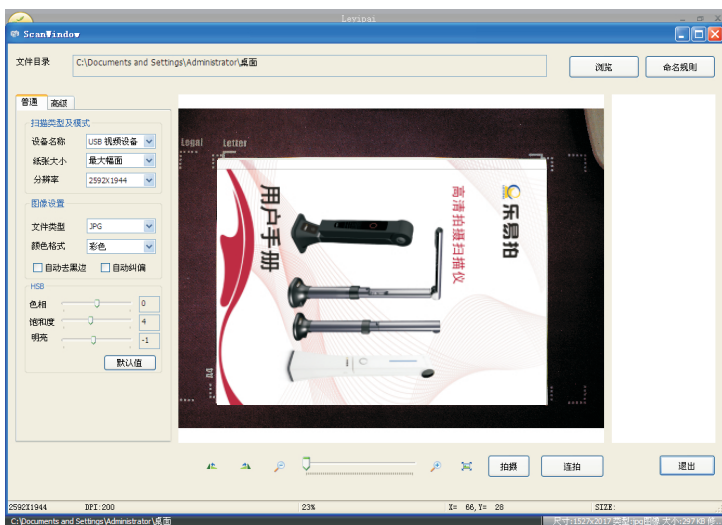
从扫描源获取图片

点击【获取图片】，弹出如下下来选项：



从拍摄仪获取图片

Leyipai CapturePro提供基于Leyipai CapturePro的强大取图模块，选择【从拍摄仪设备获取】，软件会弹出如下界面：



用户可以在这个界面做到实时拍摄，实时调整，实时取图，真正的做到所见及所得。

设备普通设置

软件在这个功能模块力求做到客户进行最少的操作即可获得所希望的图像，所以在普通选项中（如下图），软件放置了常用的部分功能选项，见下图：

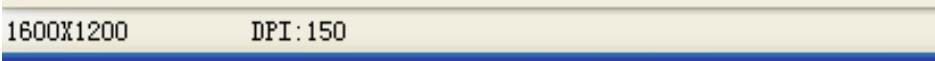


软件支持同时连接多台机器，所以在这里您可以选择当前具体使用哪一台机器取图。

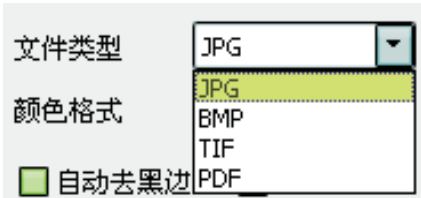
软件也提供了多种纸张大小模式选择，可以获得以屏幕为中心的标准大小图像。



并且通过选择自定义大小，可以对预览画面上的任何一部区域进行框选，真正做到所见即所得。同时可以调整设备的分辨率，以便在客户对图像有像素需求时进行相应的调整，软件窗口下方的状态栏会实时的计算出所获得图像的对应的DPI。

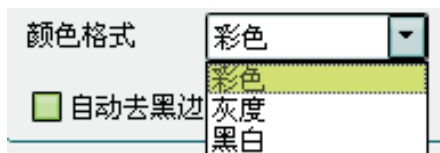


为了方便用户直接获得不同文件存储格式的图像，软件提供了多种文件格式的直接拍摄模式的选择：



NimoScan涵盖了目前最常见的JPG图像压缩格式，以及无损的BMP图片格式。另还提供了目前在档案管理以及政府公文中最常用的TIFF以及PDF文件格式，使用户可以直接得到自己所需的文件，无需二次处理。

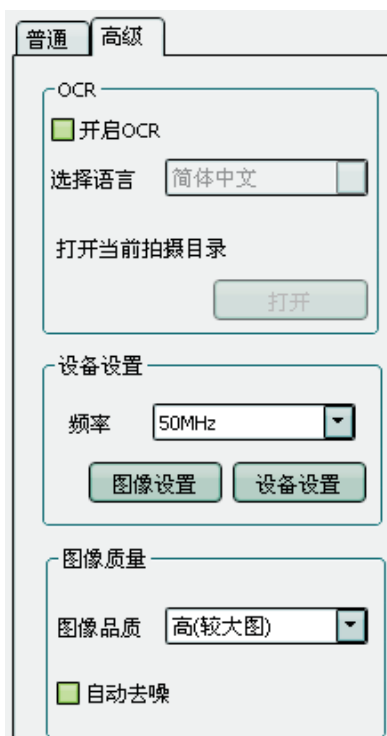
鉴于客户对于不同颜色模式的需求，软件给出了颜色格式的选择，可以直接获得彩色、灰度以及黑白图像，如此也可以更加便捷和快速的获得需要的文件：



由于在大多数情况下，拍摄所得的部分图片会将底垫部分的多余的区域拍出，所以我们提供了自动去黑边功能，以帮助用户自动的识别黑边并裁剪，以便获得更加干净的图片。软件同时提供了对硬件效果设置的功能，用户也可以根据当时的环境情况，自行临时设定当前设备的参数。

软件高级属性页

软件同时提供众多高阶功能，在软件【高级】选项卡中，如下图：



软件提供实时文字识别功能，在拍摄的同时进行文字识别。

开启拍摄时文字识别功能

勾选上【开启OCR】选项，并选择相应的语言，将拍摄时的预览角度调整至正常预览阅读方向，即会在拍摄完成后，在同目录生成一个与当期文件同名的“RTF”文件。

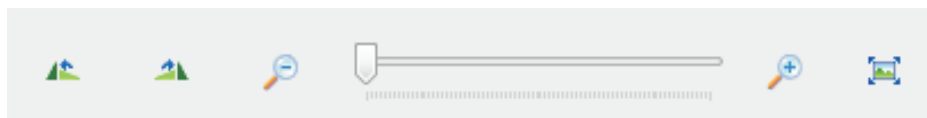
图像压缩率调整

如果在拍摄JPG文件时，对于图像质量有要求，可以在图像质量栏目选择图像品质进行设置，以获得品质更高的图像，或者是获得占用存储空间更小的文件。



图像实时预览

由于在图像拍摄过程中，传统的扫描仪无法对图像进行实时的检查，我们在软件中着重加强了这个方面的功能，我们提供如下工具栏，以便客户对于实时图像进行方便的查看：



客户可以很方便的对于当前的图像进行顺时针或逆时针90°的旋转，以便以更加适合用户阅读习惯的方式进行预览。由于预览区域有限，用户需要查看图像细节，如此软件提供了对预览图像的实时数码变焦，以使用户可以掌控图像中每个部分的细节。

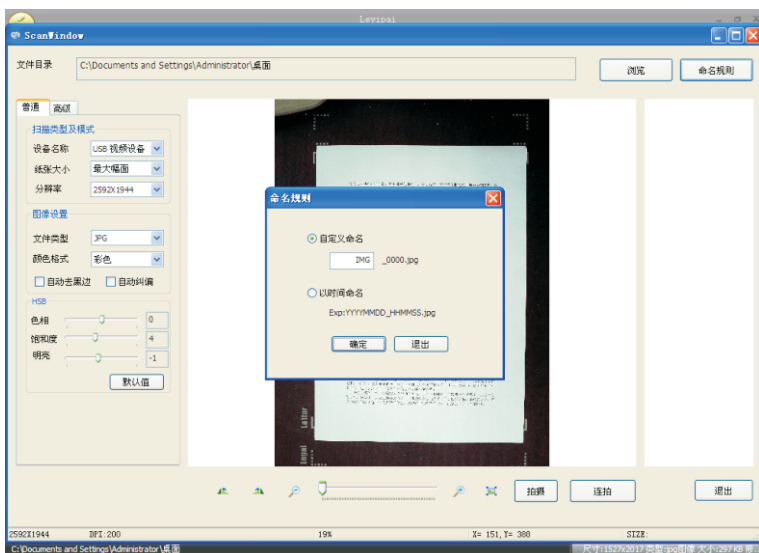
全屏模式

为了配合视频展台的应用，软件提供了全屏模式，以使用户可以获得更大的预览区域：



文件命名规则设置

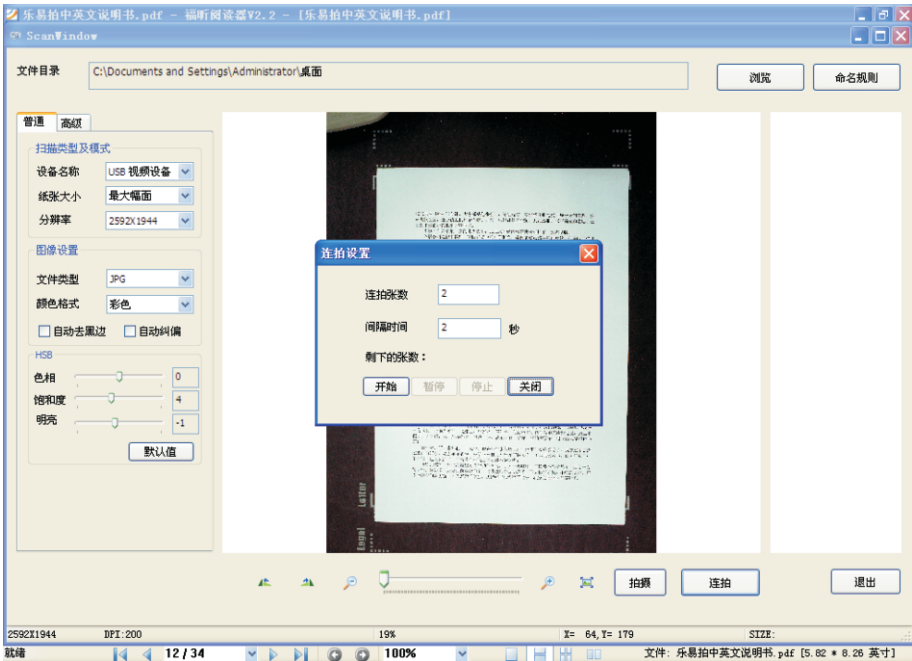
同时为了方便用户对于获取文件的管理，软件提供了自动命名功能，可以通过点击【命名规则】按钮对当前拍摄的命名规则进行设定：



可以选择通过时间自动命名，或者手动添加命名头。

连续拍摄

为了方便客户进行批处理工作，软件提供了连续拍摄功能，并可以在拍摄过程中进行暂停，恢复和重新拍摄的操作：



当次文件拍摄列表

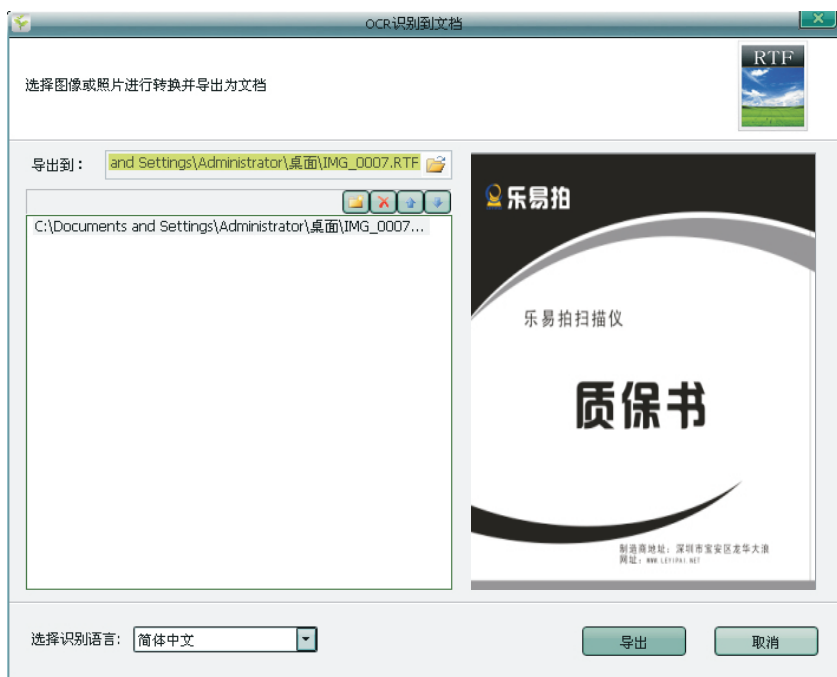
在窗口的最右侧，会记录下每次拍摄的文件，并可以对这些文件进行复制，打开等操作。

当完成拍摄后，可以退出拍摄窗口，进入软件主界面，对已经获得的图片进行二次操作。

导入导出

对已有图片进行OCR识别

点击【OCR识别到文档】，会弹出如下界面：

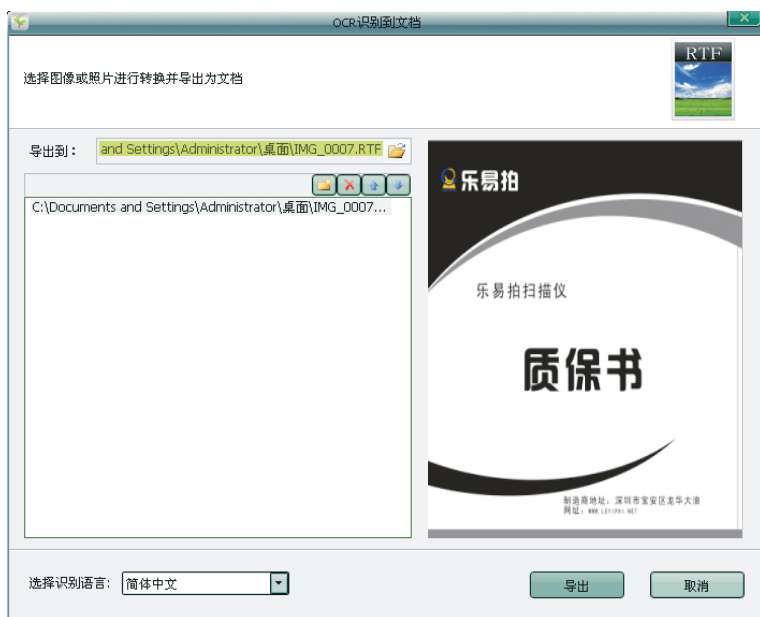


通过选择语言，点击导出，可以对当前已经添加在列表中的图片进行识别，并导出到同目录下的同名RTF文件中。并且可以在这个界面进行需要导出文件的添加与删除。



将已有图片导出到PDF

点击【合并到PDF】，会弹出如下界面：



点击导出，可以将选中的一张或多张图片导出到PDF文件中。并且可以在这个界面对文件进行删除和添加操作：

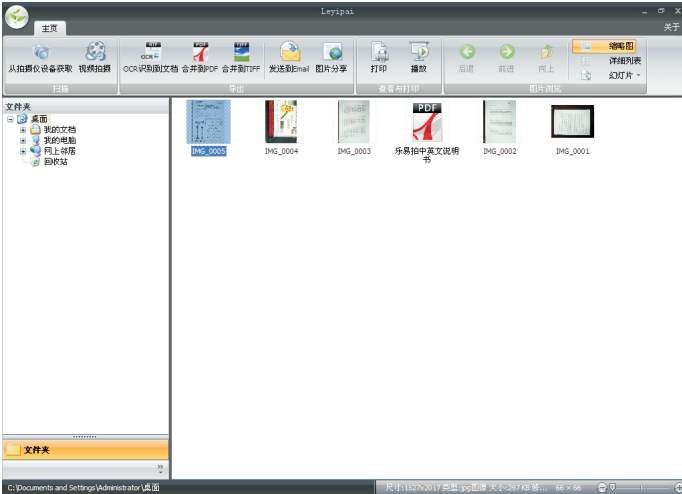


网络接口访问：

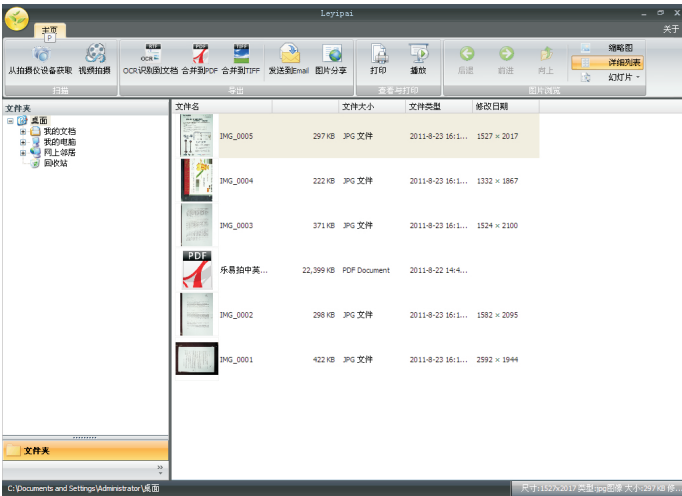
我们提供丰富的接口可以将本地资源进行网络传输（具体的网络地址可以进行配置），以及邮件的发送。

多视图浏览

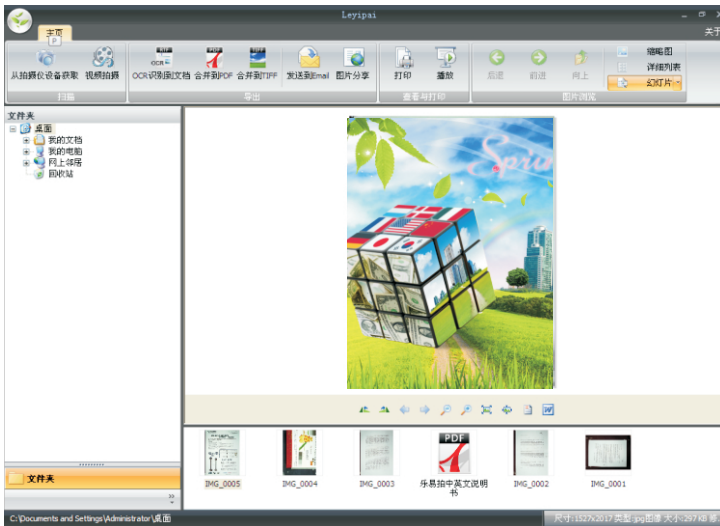
在主界面，我们提供多种浏览模式



缩略图模式

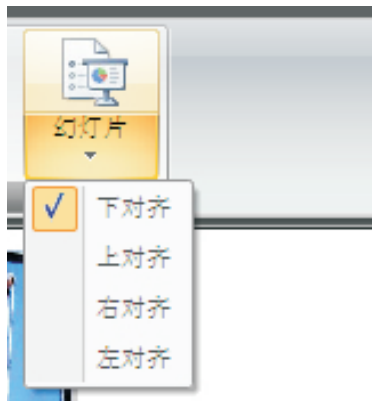


详细列表模



幻灯模式式

在幻灯模式时，还可以通过配置，将列表放置与软件界面的不同方位：



产品技术规格

项目 \ 产品型号	A580	A880	A560	A380
拍摄范围	A4	A3	A4	A4
像素	600万(2828x2121)	800万(3264x2448)	500万(2560x2048)	300万(2048x1536)
扫描图片格式	JPEG、TIF、BMP、PNG			
输出文档格式	PDF、DOC、TXT			
录像格式	AVI			
光源补偿	✓			
麦克风	×	×	✓	✓
图片管理/编辑	亮度、曝光度、锐度、颜色、饱和度、清晰度、灰度、色调、对比度、白平衡			
展开/合拢尺寸	展开尺寸： 425x245x128mm 合拢尺寸： 425x100x128mm	展开尺寸： 580x245x128mm 合拢尺寸： 580x100x128mm	展开尺寸： 333x191x68mm 合拢尺寸： 333x57x68mm	展开尺寸： 270x210x87mm 合拢尺寸： 270x74x87mm
净重	0.81KG	0.88KG	0.425KG	0.40KG
感光元件	COMS			
图像色彩	48位			

硬件规格实际可能有所差异，请以实际为准，恕不另行通知。

Table of Contents

Product Installation Guide.	19
Hardware Connection.	19
Software Installation.	20
Software instructions.	23
Get pictures from the scan source.	24
Instrument to obtain images from a Visual scanner.	24
Common settings device.	25
Advanced property page software.	27
Open the text recognition feature when shooting.	27
Image compression rate adjustment.	28
Live preview image.	28
Full screen mode.	29
File naming setting.	29
Continuous shooting.	30
Shooting when the second file list.	30
Import and Export.	30
OCR recognition of existing picture.	30
Export to PDF will have pictures.	32
Web interface.	33
View multi-view.	33
Specifications.	34

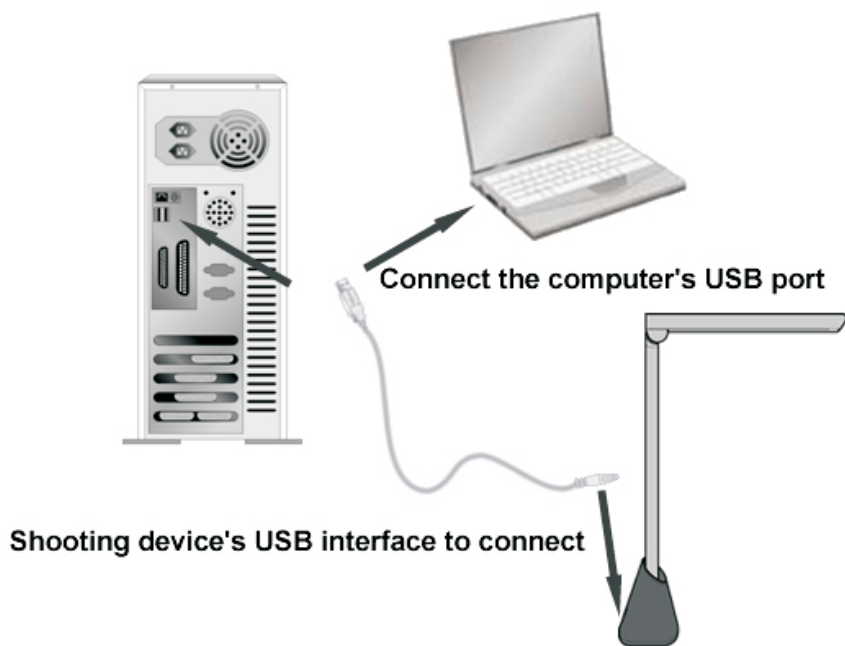
Product Installation Guide

Hardware Connection

This product is composed of a universal serial bus port is USB connected with the computer, a universal serial bus port is USB connected with the computer.

In the random parts will have USB data line, the computer is turned on, the USB data line is connected to the Visual Scanner products on the USB interface, the other end is connected to the USB interface of the computer, the connection is completed, the system will automatically find the new hardware equipment. Note: please make sure that the USB interface of the computer can be used normally, and USB2.0 interface, otherwise may cause the equipment cannot be used normally.

If you can't find a computer USB port, please refer to your computer manual

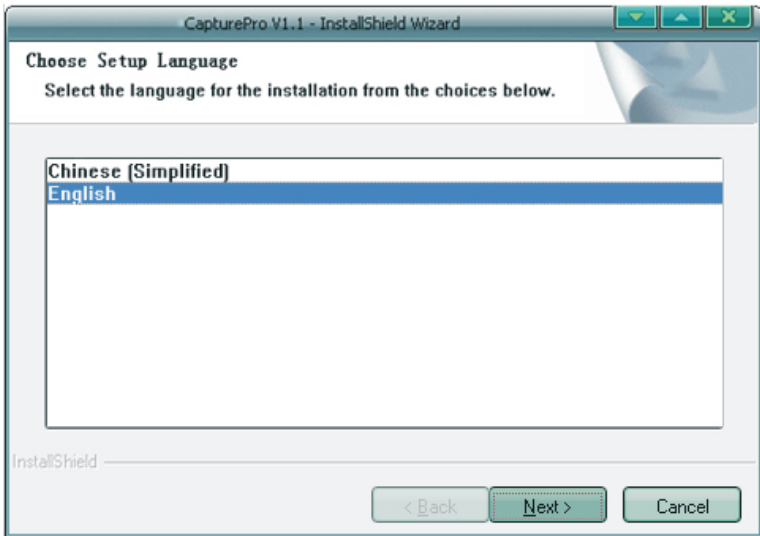


Note: the picture of Visual Scanner products are schematic, Specifications are subject to the physical product.

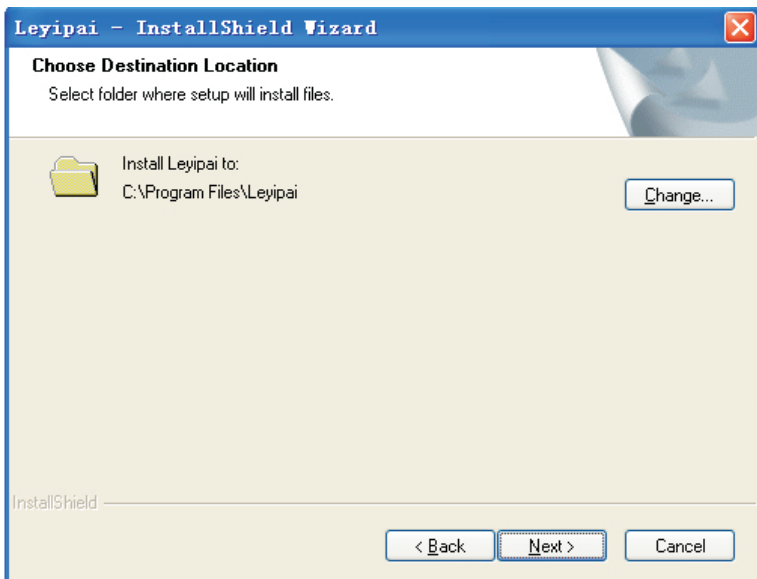
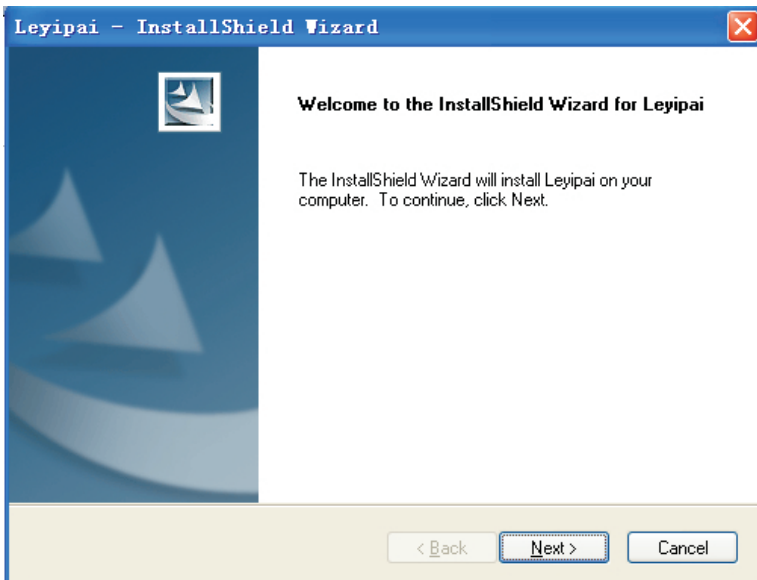
Software Installation

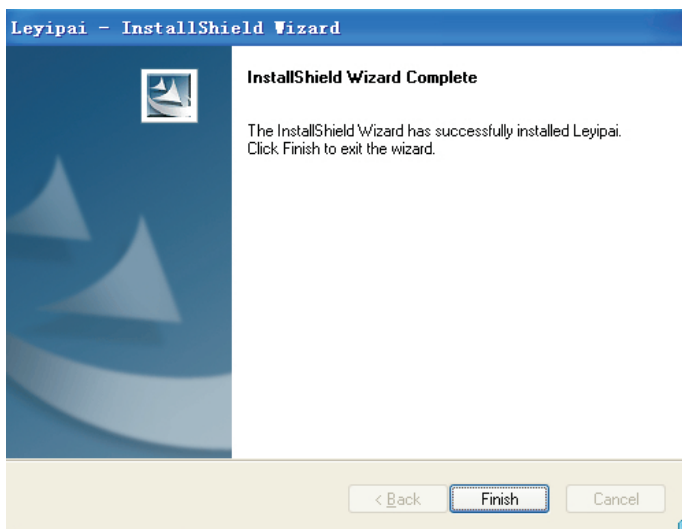
All software installed on your computer requires approximately 300 MB of hard disk space. In order to ensure adequate installation space, and you can scan and save more graphics files, the recommended minimum disk space of 1 GB.

In the Annex will be a CD-ROM, CD-ROM runs automatically after installation screen will pop up, choose a high shot instrument software for installation, the following interface:

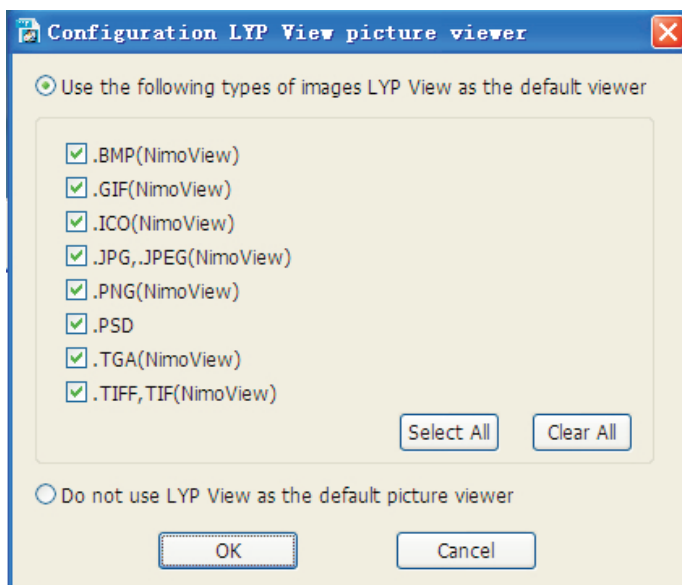


Select the appropriate language to install, the default is English, then click "Next", follow the prompts, the general default.





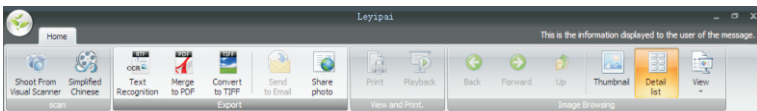
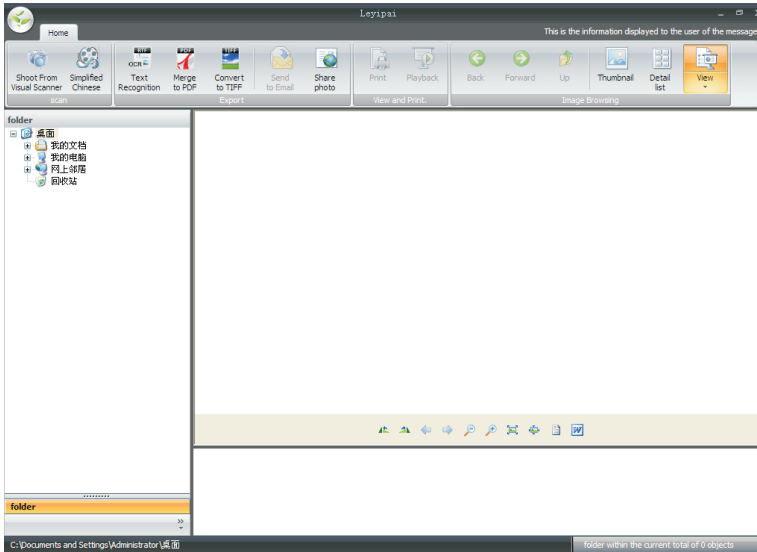
Click "Finish", the program will automatically pop-up "configuration Leyipai CapturePro View film viewer," prompt, you can choose to use the software comes with a picture viewer as a picture browsing tools, such as not using the viewer as the default viewer, directly select the bottom option button, then click the OK button, the installation is complete.



Note: If the software version has changed, please refer to the actual operation of the software version shall prevail.

Software instructions

This area provides a wealth of software features one-touch button, depending on the needs of the operation, select the appropriate function button, according to the wizard to easily complete the operation, the software shows the main interface icons are as follows:

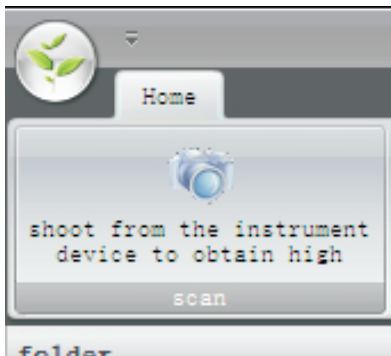


Above the main toolbar for software, including:

- 1、To obtain images from the scan source
- 2、Export images
 - a) Export the image to text (OCR recognition)
 - b) Export the image to PDF
 - c) Export multi-page TIFF image to
 - d) Export the image to the default Email Tools
 - e) Export the image to the network-side space
- 3、slide view and print
 - a) A variety of standard templates to print
 - b) NimoView Slideshow
- 4、The main interface navigation options

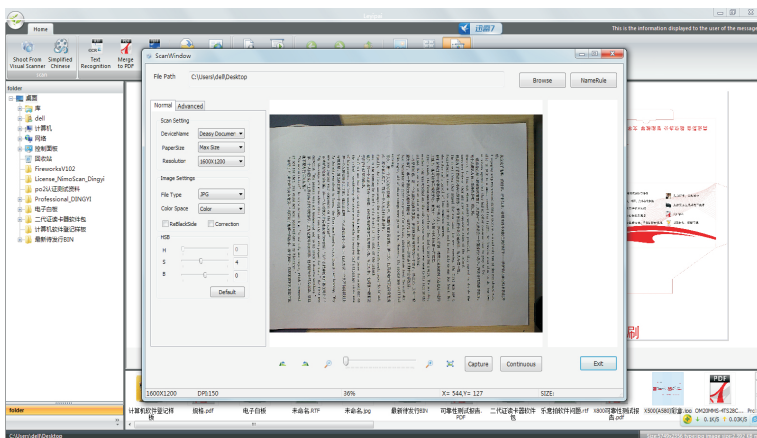
Get pictures from the scan source

Click **【Capture Picture】** , pop down the following options:



Instrument to obtain images from a Visual scanner

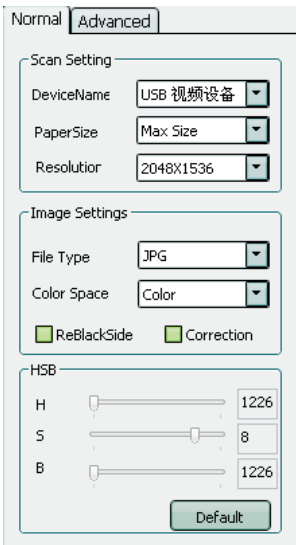
Leyipai CapturePro provides a powerful check on Leyipai CapturePro Window graph module, **【select the shot from the high instrument equipment】** for the software will pop up the following interface:



Users can do real-time shooting this interface, real-time adjustment, real-time access maps, make findings and real income.

Common settings device

Software modules in the least to do our customers can get the desired operation of the image, so in the general options (below), the software placed some common options, see below:



Software supports multiple simultaneous connections machines, so here you can choose which machine to use the current machine to take the specific plans. Software also provides a variety of paper size mode selection, you can get to the screen as the center of the standard size image.

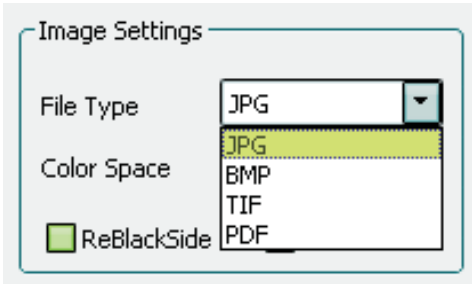


And by selecting a custom size, you can preview any one area on the marquee, truly WYSIWYG.

Equipment also can adjust the resolution to a pixel on the image in the customer demand and make the appropriate adjustments to the status bar at the bottom of the software window will be calculated in real-time images obtained by the corresponding DPI.

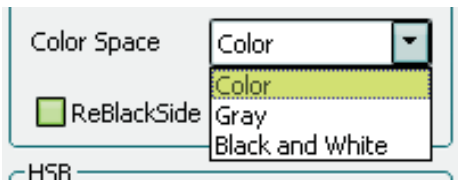
2048X1536	DPI:150	29%
-----------	---------	-----

To facilitate direct access to different file storage format of the image, the software offers a variety of file formats directly to the shooting mode selection:



NimoScan covers the most common image compression formats JPG and BMP image format lossless. Another offers the current government documents in the file management and the most commonly used TIFF and PDF file format, so users can get the files they need, without secondary treatment.

View of the customer demand for different color modes, the software is given the choice of color format, can be color, grayscale and black and white images, so you can more easily and quickly get the required documents:



Since in most cases, pictures will be taken from the bottom part of the excess part of the area pad sold, so we went to the black side provides automatic features to help users automatically identify and cut the black edges in order to obtain cleaner Picture.

Software also provides a set of hardware effects, users can also be based on environmental conditions at the time, the temporary set their own parameters of the current device.

Advanced property page software

Software also provides many advanced features in software **【Advanced】** tab, as shown below:

The screenshot displays the 'Advanced' tab of a software interface. It features three main sections: OCR, Device Settings, and Image Quality. The OCR section includes a checkbox for 'EnableOCR', a dropdown menu for 'OCRLanguage' set to 'Simplified Chinese', and a 'View' button. The Device Settings section shows a 'Frequency' dropdown set to '50MHz' and two buttons: 'Image Settings' and 'Dev Settings'. The Image Quality section has an 'ImageQuality' dropdown set to 'High' and a 'NoiseCancellation' checkbox.

Section	Parameter	Value
OCR	EnableOCR	<input checked="" type="checkbox"/>
	OCRLanguage	Simplified Chinese
	View	View
Device Settings	Frequency	50MHz
	Image Settings	Image Settings
Image Quality	ImageQuality	High
	NoiseCancellation	<input checked="" type="checkbox"/>

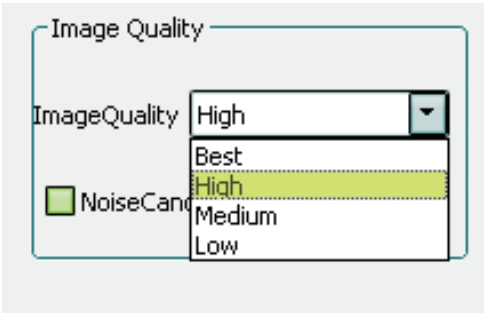
Software provides real-time language recognition, in the shooting at the same time character recognition.

Open the text recognition feature when shooting

Check on the 【open OCR】 option, and select the appropriate language to adjust the shooting angle to the normal preview reading direction, which will be completed in the shooting, in the same directory to generate a current file with the same name "RTF "File.

Image compression rate adjustment

If shooting JPG file, the image quality is required, you can select the image quality, image quality set column to obtain higher quality images take up storage space or get a smaller file.



Live preview image

Since the image capture process, the conventional image scanner can not check in real time, we in the software focus on strengthening the function of this area, we offer the following tool bar, so that customers real-time images for easy viewing:



Customers can easily carry out the current image clockwise or counterclockwise rotation of 90 ° so that the user reading habits in a more appropriate way to preview. The preview area is limited, users need to view the image details, such software provides real-time preview image, digital zoom, so that users can control the details of each part of the image.

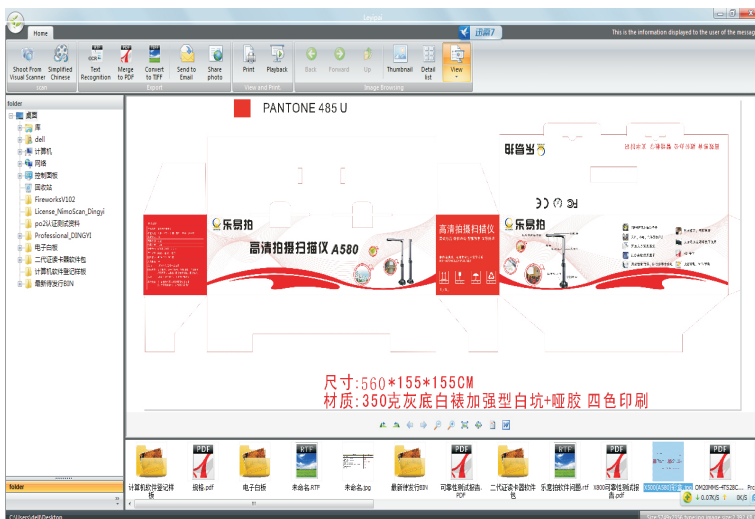
Full screen mode

To meet the video booth application software provides full-screen mode, so users can get a preview of a larger area:



File naming setting

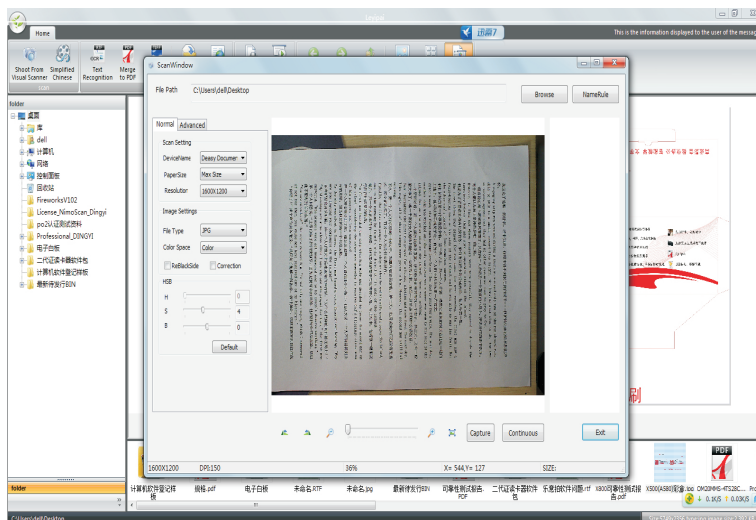
Meanwhile, in order to facilitate access to documents for the management of the user, the software provides automatic naming feature, you can click the button **【naming names】** recorded on the current rules set:



Automatically named by the time the option, or manually add the name first.

Continuous shooting

In order to facilitate customers in a batch job, the software provides a continuous shooting function, and can be suspended in the filming process, rehabilitation and re-shoot the operation:



Shooting when the second file list

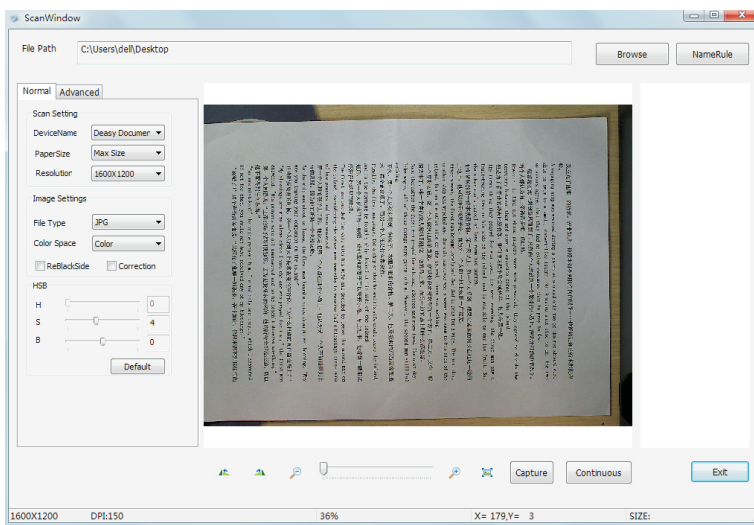
The far right of the window, it will record every shot of the file, and can copy these files to open such an operation.

When finished recording, you can shoot out the window and enter the main interface, the picture has got a second operation.

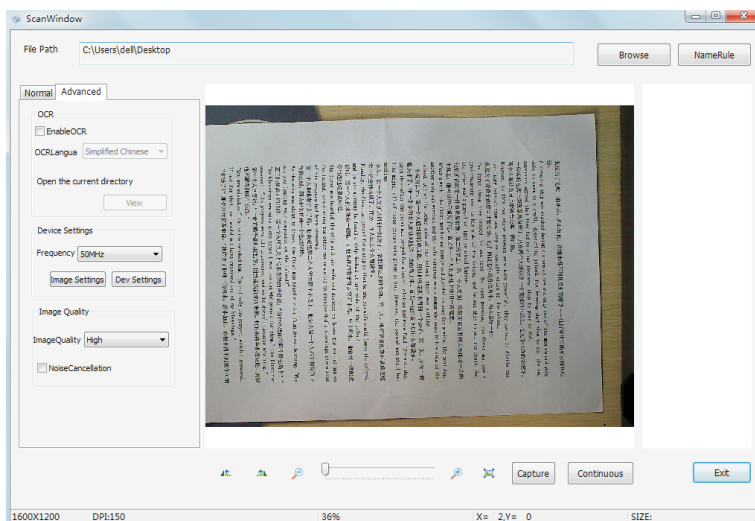
Import and Export

OCR recognition of existing picture

Click **【OCR recognition to the document】** will pop up the following interface:

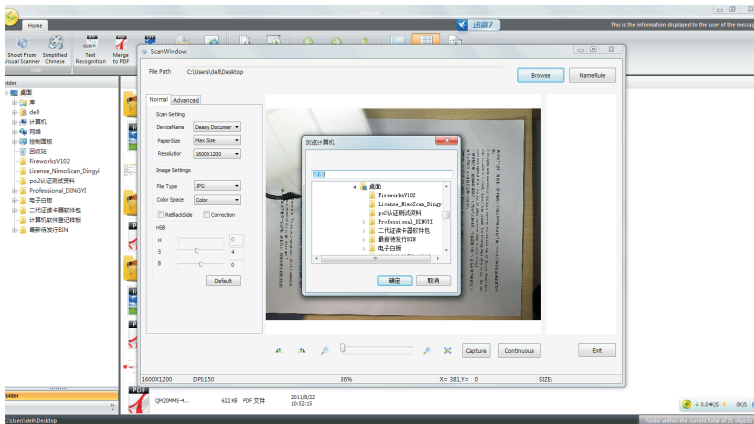


By selecting the language, click Export, you can have added to the current picture in the list, identify, and export to the directory with the same name as the RTF file. And may need to export this interface to add and delete files.

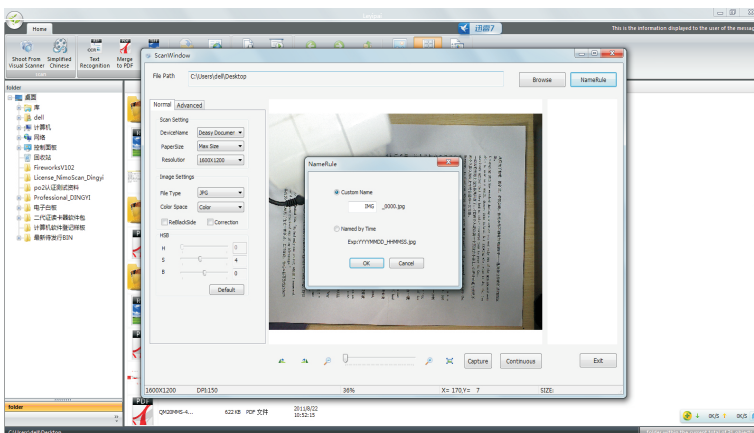


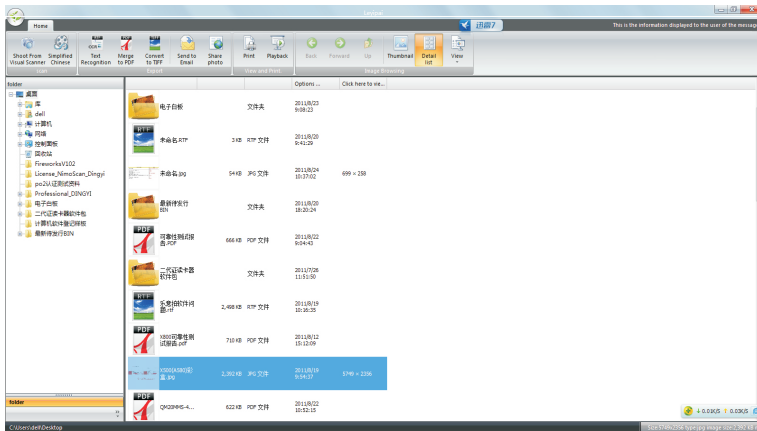
Export to PDF will have pictures

Click 【into PDF】 will pop up the following interface:



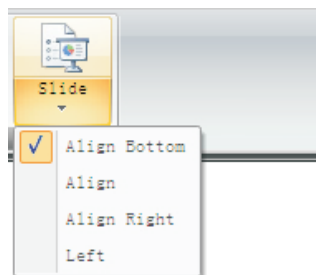
Click Export, you can select the picture or pictures to export to PDF file. In this interface, and can delete the file and add the following:





Slideshow

In slide mode, you can also be configured to be placed with the software interface will list the different directions:



Product Specification

Item \ Model No.	A580	A880	A560	A380
Capture size	A4	A3	A4	A4
Image pixels	6.0 mega (2828x2121)	8.0 mega (3264x2448)	5.0 mega (2560x2048)	3.0 mega (2048x1536)
Scanned image format	JPEG、TIF、BMP、PNG			
Document output format	PDF、DOC、TXT			
Video format	AVI			
Light compensation	✓			
Microphone	×	×	✓	✓
Image editing	Brightness, Exposure, Sharpness, Color, Saturation, Clarity, gamma, hue, Contrast, White balance			
Expended/Folded size	Expended : 425x245x128mm Folded : 425x100x128mm	Expended : 580x245x128mm Folded : 580x100x128mm	Expended : 333x191x68mm Folded : 333x57x68mm	Expended : 270x210x87mm Folded : 270x74x87mm
Net Weight	0.81KG	0.88KG	0.425KG	0.40KG
Image Sensor	COMS			
Image color	48bit			

Hardware specifications may change at any time please refer to the fact situation without prior notice.