

BGP100 Bluetooth GamePad

User's Manual for Palm PDA



GAMEPAD

Manufacturer's Disclaimer Statement

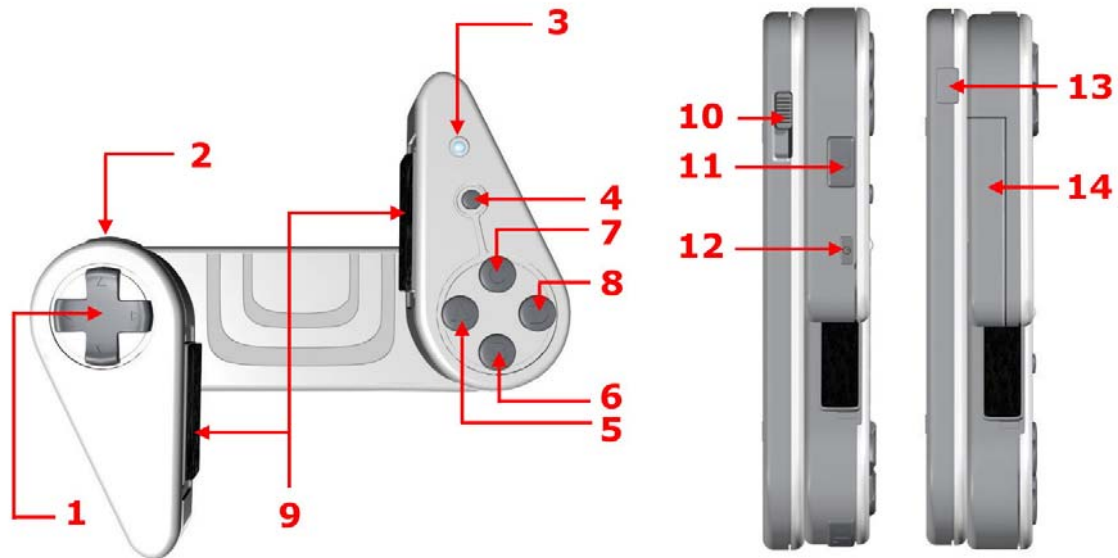
The information in this document is subject to change without notice and does not represent a commitment on the part of the vendor. No warranty or representation, either expressed or implied, is made with respect to the quality, accuracy or fitness for any particular purpose of this document. The manufacturer reserves the right to make changes to the content of this document and / or the products associated with it at any time without obligation to notify any person or organization of such changes. In no event will the manufacturer be liable for direct, indirect, special, incidental or consequential damages arising out of the use or inability to use this product or documentation, even if advised of the possibility of such damages. This document contains materials protected by copyright. All rights are reserved. No part of this manual may be reproduced or transmitted in any form, by any means or for any purpose without expressed written consent of its authors. Product names appearing in this document are mentioned for identification purchases only. All trademarks, product names or brand names appearing in this document are registered property of their respective owner.

Table of Contents

Manufacturer's Disclaimer Statement	2
Introducing BGP100 Bluetooth GamePad	4
➤ GamePad Features	4
➤ GamePad Set Up	5
GamePad Driver Installation	7
➤ Before Use	7
➤ System Requirements	7
➤ Installing / Uninstalling / Upgrading the GamePad Driver.....	7
Configuring BGP100 Bluetooth GamePad	9
The "Config" Page	10
➤ Active GamePad	10
➤ Reconnection	11
➤ The "About" Page.....	11
➤ Defining the Buttons / Keys for the GamePad.....	12
Appendices	14
➤ Appendix 1 : LED.....	14
➤ Appendix 2 : Product & Technical Specifications	15
➤ Appendix 3 : Troubleshooting.....	16

Introducing BGP100 Bluetooth GamePad

- GamePad Features



1. Up / Down / Left / Right Arrow Keys
2. "L" Key
3. LED
4. "Start" Key
5. Button "A"
6. Button "B"
7. Button "C"
8. Button "D"
9. Adjustable Rubber Strips

10. GamePad Lock
11. "R" Key
12. Power Switch
13. Adjustable Button
14. Battery Cover

● GamePad Set Up

Step 1 :

Turn on the power switch located on the right boarder of the right wing (above the "R" key). Check the status of LED : it will flash red and green at the same time for 1 split second and this indicates "power on" (Figure 1).

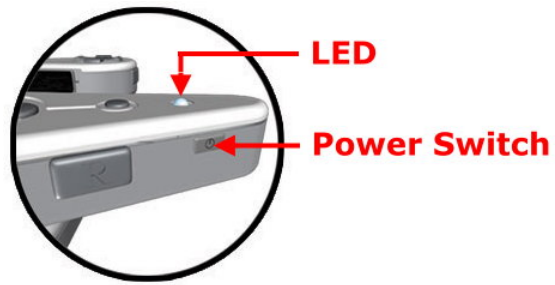


Figure 1

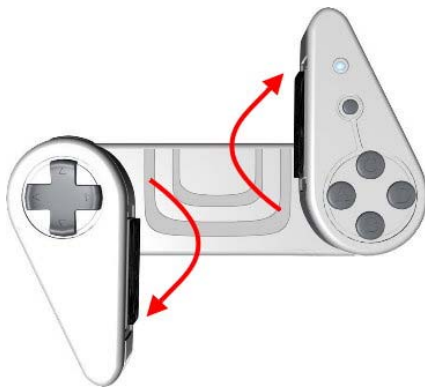


Figure 2

Step 2 :

Move the left wing downward or right wing upward until the GamePad locks itself (Figure 2).

Step 3 :

Place your Pocket PC at the centre of the GamePad. The rubber strips (located on the left and right inner edges of the left and right wings) can be adjusted to avoid any buttons / keys located on either side of the device (Figure 3).

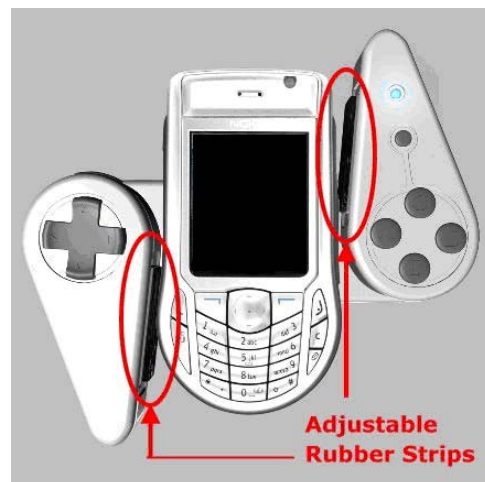


Figure 3

Step 4 :

Press the button located on the bottom left edge of the GamePad. This button will adjust the left and right wings to help best fit your device on the GamePad (Figure 4).

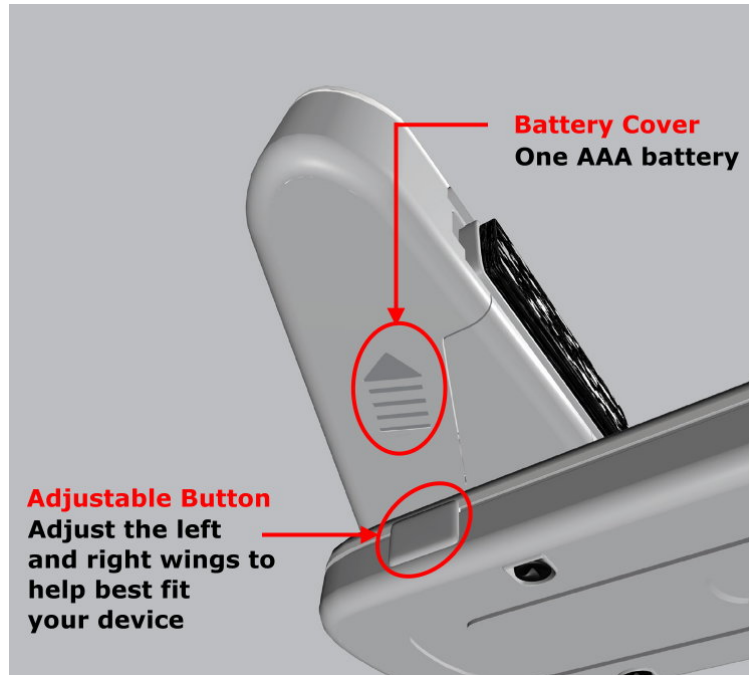


Figure 4

Step 5 :

Lastly, push the button located on the top right edge to the left. This mechanism will further secure your device and prevent it from falling off the GamePad (Figure 5).



Figure 5

GamePad Driver Installation

● Before Use

- 1) Check the battery status of your GamePad.
- 2) Disable or remove other previously installed applications which will require the use of Bluetooth serial port profile on your PDA.
(Note: May vary with different PDA device)

● System Requirements

- ✧ Palm OS 5.0 with built-in Bluetooth
- ✧ A minimum of **30 KB** memory on your Palm device
- ✧ PC with Microsoft Windows 2000 / XP operating systems
- ✧ A synchronizing program on your PC, i.e., **such as Palm™ Desktop Software, for copying files to your Palm OS device.**

● Installing / Uninstalling / Upgrading the GamePad Driver

Installing the GamePad Driver

1. Connect your Palm OS device via Infrared / Cable for HotSync software with your PC.
2. Insert the GamePad CD into the CD-ROM drive of your PC.
3. Follow the instructions on screen to complete the installation.
4. A GamePad icon can be found under the Menu section of the Palm OS device when driver installation is completed (Figure 6).



Figure 6

Uninstalling the GamePad Driver

Step 1 :

Make sure the GamePad is disconnected from your Palm device.

Step 2 :

Home list → “Date” (Delete, select “GamePad” and click Remove (Figure 7).

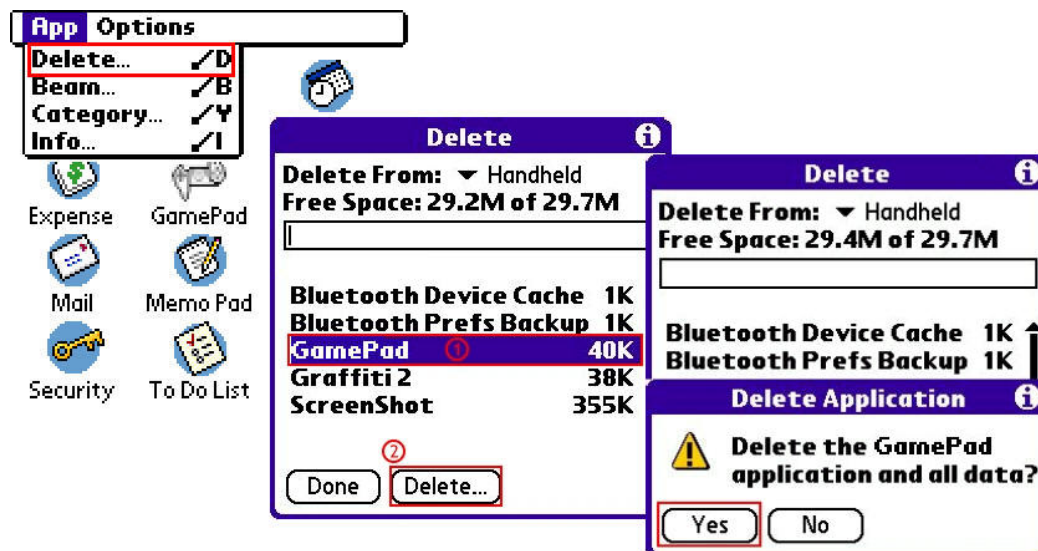


Figure 7

Upgrading the GamePad Driver

Please check the agent's website regularly for any new driver release
(Note: The current driver MUST be removed BEFORE installing a new driver on your device).

Configuring BGP100 Bluetooth GamePad

- When you click the "GamePad" icon, the following pages "Config" and "About" will appear (Figure 8).

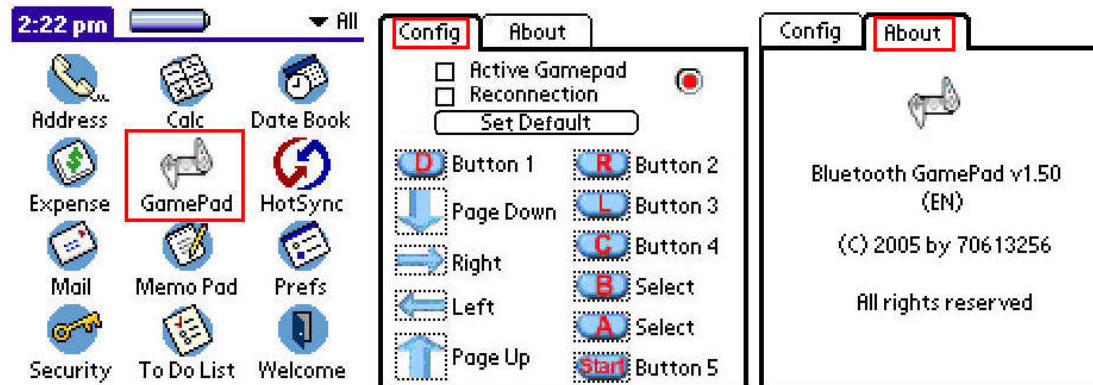


Figure 8

The “Config” Page

➤ Active GamePad

● How to connect the GamePad to your Palm PDA ?

Step 1 :

Turn on the GamePad power switch. The LED will flash green and red for 1 split second. When the LED flashes a “green” light once every 2 seconds, it is on standby and can be detected by your device.

Step 2 :

Select the “GamePad” icon in the home list of your Palm PDA (Figure 9).



Figure 9

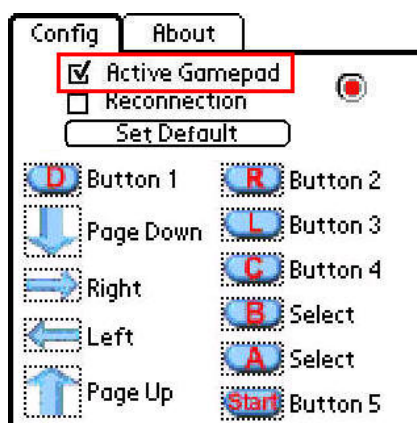


Figure 10

Step 3 :

Select “Active GamePad”.

Your PDA will search then connect to the GamePad automatically (Figure 10).

Step 4 :

When a connection is established successfully, the LED will flash a “green” light twice every 4 seconds.

Please note that the LED light on the PDA screen change to green when Bluetooth is enabled (Figure 11).

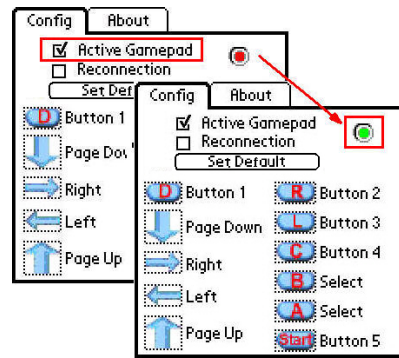


Figure 11

NOTE :

If you are in the “Config” page , but the disconnection of GamePad is caused by power off of Gamepad or sleeping mode of PDA , the disconnection information won’t pop out, unless you leave the “Config” page first.

➤ **Reconnection**

When a connection is established successfully, “Reconnection” can then be activated.

This function allows the GamePad to memorize the last connected device in order to speed up the process for future connection.

(Note : Please do not use “Reconnection” unless an initial connection has been established previously) (Figure 12).

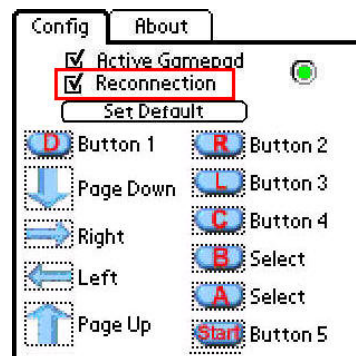


Figure 12

➤ **The “About” Page**

How to find out the GamePad driver version which you are using ?

Please click the “About” page (Figure 13)

Driver version : v 1.50

English Version : EN

German Version : DE

French Version : FR

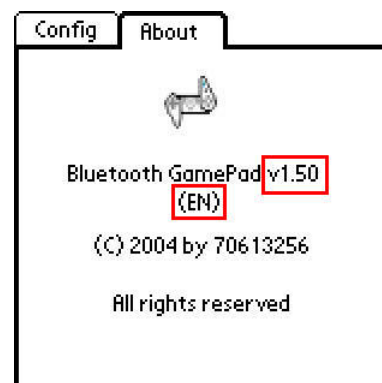


Figure 13

➤ **Defining the Buttons / Keys for the GamePad**

There are 4 buttons / 7 keys on the GamePad:

1. "Up" Arrow Key
2. "Down" Arrow Key
3. "Left" Arrow Key
4. "Right" Arrow Key
5. "Left" Soft Key
6. "Right" Soft Key
7. "Start" Key
8. Button "A"
9. Button "B"
10. Button "C"
11. Button "D"

Step 1 :

Select the "GamePad" icon in the home list (Figure 14).



Figure 14

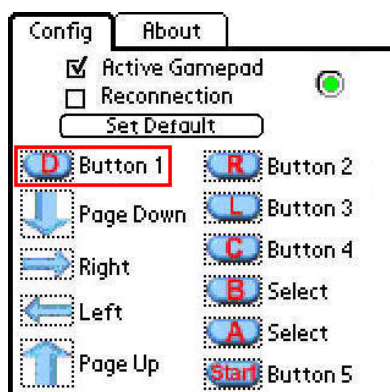


Figure 15

Step 2 :

The button / key setting page will then appear. All 11 buttons / keys are definable and they represent the 11 buttons / keys on the GamePad.

You will use "Up" arrow key as an example for the following button / key setting procedure (Figure 15).

Step 3:

When any of the 11 buttons / keys is selected, an instruction box will appear. You can then use the hardware buttons on the PDA to define any buttons / keys of your choice (Figure 16).

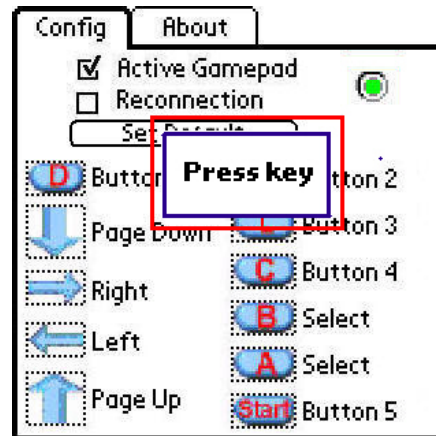


Figure 16

Appendices

● Appendix 1 : LED

The light (LED) located on the right wing above the “Start” Key indicates the status of your GamePad

- 1) The LED flashes green and red at the same time for 1 split second when the power of your GamePad has been switched on.
- 2) When the LED flashes a “green” light approximately once every 2 seconds, it is on standby and can be detected by your device.
- 3) When the LED flashes a “green” light approximately twice every 4 seconds, it is connected to your device and is ready for use.
- 4) When the LED flashes a “red” light ONLY, it indicates that the battery needs to be replaced in order to resume normal operation.

● **Appendix 2 : Product & Technical Specifications**

1) Function

Arrow Keys : Up / down / Left / Right (4-way)

Custom Keys : 6 (A, B, C, D, Left and Right)

Start Key : 1

Support System : Symbian S60, Symbian UIQ, PPC, MS Smartphone

Multilingual Support

2) Electronics

Bi-color LED : 1

Battery : 1 *(1.5V "AAA" battery)

Power on / off switch : 1

Standby Current : 1~10mA, depending on handheld device

Operation Current : 2~50mA, depending on handheld device

Standby Time : 39/H, "Disconnected" and power on
9/H, "Connected" and ready for use

Operation Time : 3.5/H, functioning continuously

3) Mechanics

Dimensions Closed : 145 mm x 44 mm x 30.5 mm

Dimensions Open : 145 mm x 127.3 mm x 30.5 mm

Weight (including 1.5V*1) : 130.2g

4) Operating Environment

Operating Temperature Range : -10~50°C (Humidity 5~90%RH)


Storage Temperature Range : -30~70°C (Humidity 5~90%RH)

Relative Humidity : 95% at 65°C

ESD Humidity : ±8KV

● **Appendix 3 : Troubleshooting**

1. I am not able to install Bluetooth GamePad driver to my Palm OS device ?


- 1) Please following the quick install guide for the installation , and store the driver I nto HotSync Manager application.
- 2) Please ensure the connection cable is connected between PC and Palm OS device.
- 3) Please check "HotSync" application is right down on your system tray.
- 4) Click " icon → HotSync" on your Palm OS device.
- 5) If you synchronize the action of copying files , the driver should install to your Palm OS device automatically.
(If you did fail to connect with your PC, please check the connection cable between Palm OS device and PC first.)

2. Why Palm OS device has no response when I type on Bluetooth GamePad ?

- 1) Make sure the GamePad is in the connected status by LED flash time.
- 2) Check the battery of mobile device is charged.
- 3) Check the batteries of Bluetooth GamePad have enough power by LED color.

3. What's happened if I have already searched the "GAMEPAD" device from my Palm OS device, but I couldn't build the connection between the GamePad and my device, and there is a message of "Can not connect your GamePad. Please check the power status of the GamePad, and try again."?

1) During the search mode in your Palm OS device , the device should display as below, if the small graph didn't show as below, please close the Bluetooth from

your Palm OS device (tap "  icon → Prefs → Communication → Bluetooth, and turn off the Bluetooth) , then re-click the active keyboard again.

