

# **BGP100 Bluetooth GamePad**

**User's Manual for Microsoft Pocket PC 2003/Phone Edition**



## **GAMEPAD**

## **Manufacturer's Disclaimer Statement**

The information in this document is subject to change without notice and does not represent a commitment on the part of the vendor. No warranty or representation, either expressed or implied, is made with respect to the quality, accuracy or fitness for any particular purpose of this document. The manufacturer reserves the right to make changes to the content of this document and / or the products associated with it at any time without obligation to notify any person or organization of such changes. In no event will the manufacturer be liable for direct, indirect, special, incidental or consequential damages arising out of the use or inability to use this product or documentation, even if advised of the possibility of such damages. This document contains materials protected by copyright. All rights are reserved. No part of this manual may be reproduced or transmitted in any form, by any means or for any purpose without expressed written consent of its authors. Product names appearing in this document are mentioned for identification purchases only. All trademarks, product names or brand names appearing in this document are registered property of their respective owner.

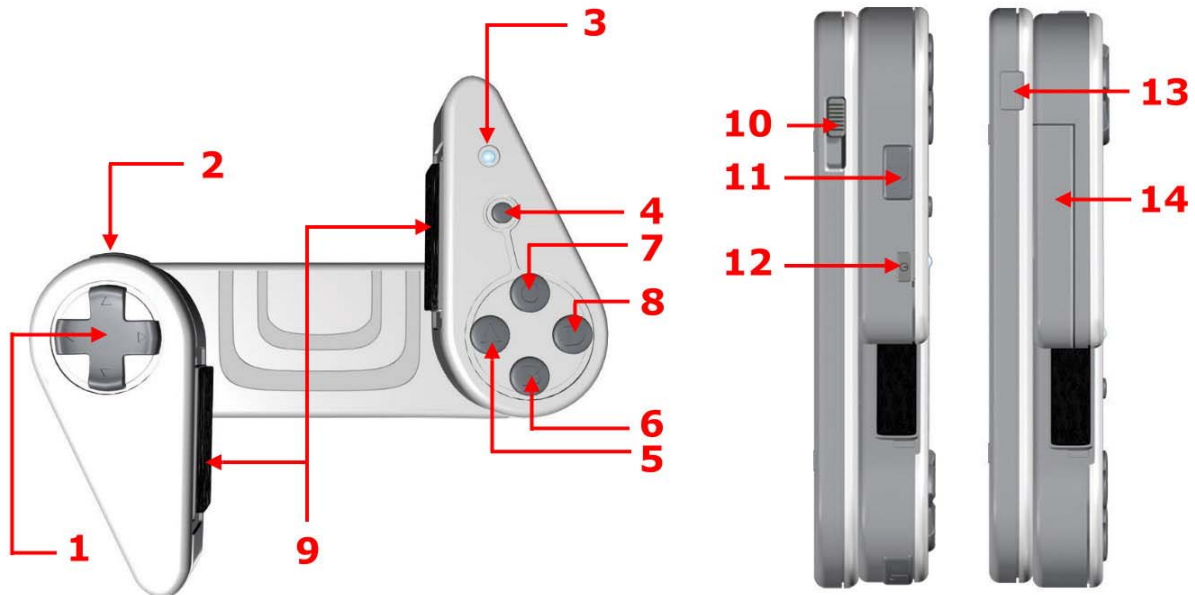
## Table of Contents

---

<b>Manufacturer's Disclaimer Statement .....</b>	<b>2</b>
<b>Introducing BGP100 Bluetooth GamePad .....</b>	<b>4</b>
➤ GamePad Features .....	4
➤ GamePad Set Up .....	5-6
<b>GamePad Driver Installation .....</b>	<b>7</b>
➤ Before Use .....	7
➤ System Requirements .....	7
➤ Installing / Uninstalling / Upgrading the GamePad Driver.....	7-8
<b>Configuring BGP100 Bluetooth GamePad .....</b>	<b>9</b>
<b>The "Config" Page .....</b>	<b>10</b>
➤ Active GamePad .....	10-11
➤ Reconnection .....	11
➤ The "About" Page.....	11
➤ Defining the Buttons / Keys for the GamePad.....	12-13
<b>Appendices .....</b>	<b>14</b>
➤ Appendix 1 : LED.....	14
➤ Appendix 2 : Product & Technical Specifications .....	15
➤ Appendix 3 : Troubleshooting.....	16

## Introducing BGP100 Bluetooth GamePad

- **GamePad Features**



1. Up / Down / Left / Right Arrow Keys
2. "L" Key
3. LED
4. "Start" Key
5. Button "A"
6. Button "B"
7. Button "C"
8. Button "D"
9. Adjustable Rubber Strips

10. GamePad Lock
11. "R" Key
12. Power Switch
13. Adjustable Button
14. Battery Cover

- **GamePad Set Up**

**Step 1 :**

Turn on the power switch located on the right boarder of the right wing (above the "R" key).

Check the status of LED :

it will flash red and green at the same time for 1 split second and this indicates "power on" (Figure 1).

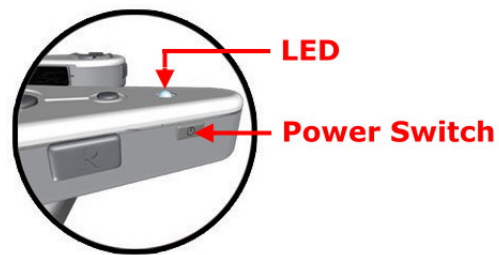


Figure 1

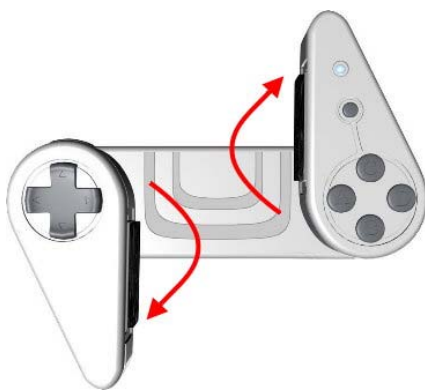


Figure 2

**Step 2 :**

Move the left wing downward or right wing upward until the GamePad locks itself (Figure 2).

**Step 3 :**

Place your Pocket PC at the centre of the GamePad.

The rubber strips ( located on the left and right inner edges of the left and right wings ) can be adjusted to avoid any buttons / keys located on either side of the device (Figure 3).



Figure 3

**Step 4 :**

Press the button located on the bottom left edge of the GamePad.

This button will adjust the left and right wings to help best fit your device on the GamePad (Figure 4).

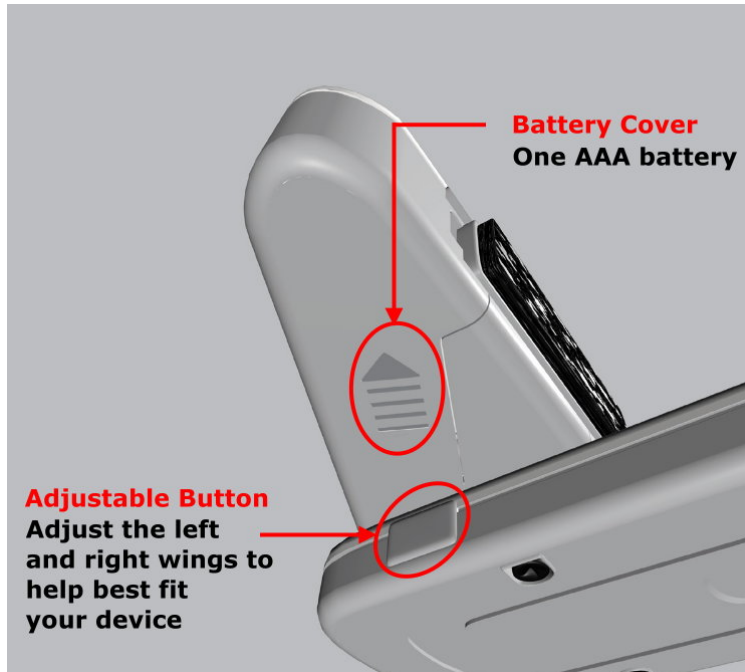


Figure 4

**Step 5 :**

Lastly, push the button located on the top right edge to the left.

This mechanism will further secure your device and prevent it from falling off the GamePad (Figure 5).



Figure 5

## GamePad Driver Installation

---

- **Before Use**

- 1) Check the battery status of your GamePad
- 2) Disable or remove other previously installed applications which will require the use of Bluetooth serial port profile on your Pocket PC.  
(Note : May vary with different Pocket PC device)

- **System Requirements**

- ✧ Microsoft Pocket PC 2003 with built-in Bluetooth
- ✧ A minimum of 450 KB memory on your Pocket PC
- ✧ PC with Microsoft Windows 2000 / XP operating systems
- ✧ A synchronizing program on your PC, i.e., Microsoft ActiveSync 3.6 or higher, for copying files onto the Pocket PC

- **Installing / Uninstalling / Upgrading the GamePad Driver**

### *Installing the GamePad Driver*

1. Connect your Microsoft Pocket PC 2003 via Infrared / Cable for ActiveSync with your PC.
2. Insert the GamePad CD into the CD-ROM drive of your PC.
3. Follow the instructions on screen to complete installation.
4. A GamePad icon can be found under the Menu section of the Pocket PC when driver installation is complete (Figure 6).



Figure 6

### ***Uninstalling the GamePad Driver***

#### **Step 1 :**

Make sure the GamePad is disconnected from your Pocket PC.

#### **Step 2 :**

Tap Start→ Settings→ System, select “**Bluetooth GamePad**” and click **Remove** (Figure 7).

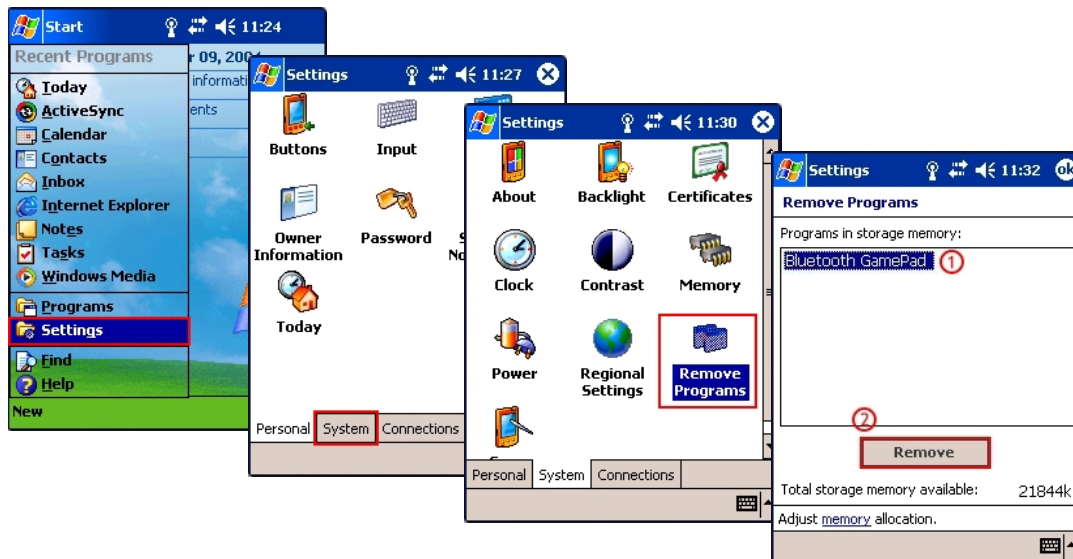


Figure 7

### ***Upgrading the GamePad Driver***

Please check the agent's website regularly for any new driver release.

(Note : The current driver **MUST** be removed **BEFORE** installing a new driver on your device).



## Configuring BGP100 Bluetooth GamePad

- When you click the “GamePad” icon, the following pages “Config” and “About” will appear (Figure 8).

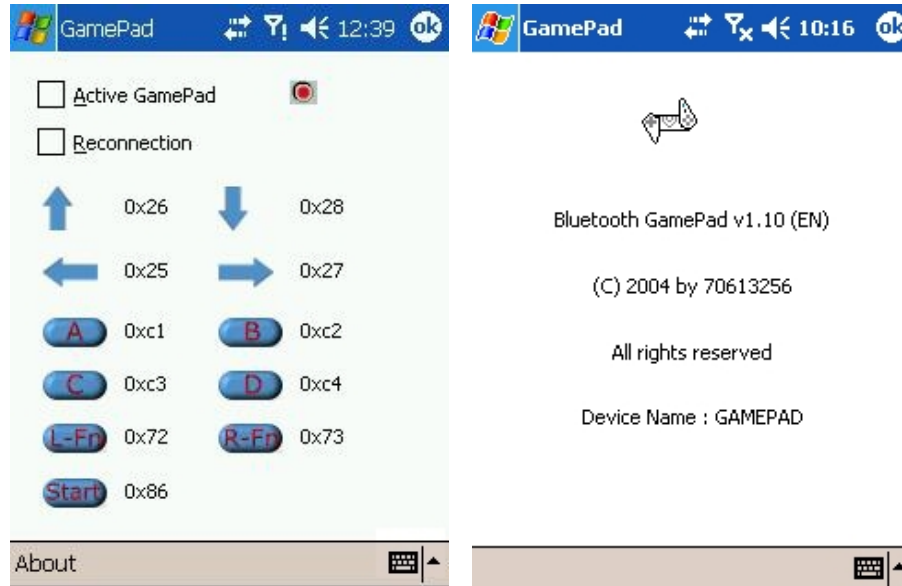


Figure 8

## The “Config” Page

### ➤ **Active GamePad**

#### ● **How to connect the GamePad to your Pocket PC ?**

##### **Step 1 :**

Turn on the GamePad power switch.

The LED will flash green and red for 1 split second.

When the LED flashes a “green” light once every 2 seconds, it is on standby and can be detected by your device.

##### **Step 2 :**

Select the “GamePad” icon in the application list of your Pocket PC. (Figure 9).



Figure 9

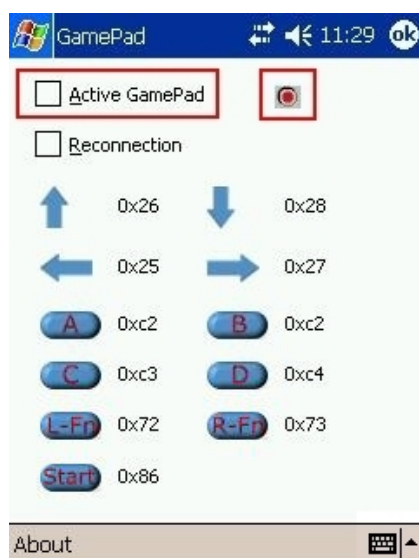


Figure 10

##### **Step 3 :**

Select “Active GamePad”.

Your Pocket PC will search then connect to the GamePad automatically. (Figure 10).

**Step 4 :**

When a connection is established successfully, the LED will flash a “green” light twice every 4 seconds.

Please note that the LED light on the Pocket PC flashes when Bluetooth is enabled. (Figure 11).

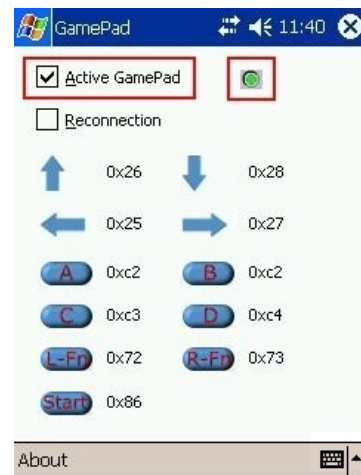


Figure 11

➤ **Reconnection**

When a connection is established successfully, “Reconnection” can then be activated.

This function allows the GamePad to memorize the last connected device in order to speed up the process for future connection.

(Note : Please do not use “Reconnection” unless an initial connection has been established previously) (Figure 12).



Figure 12

➤ **The “About” Page**

How to find out the GamePad driver version which you are using ?

Please click the “About” page (Figure 13)

Driver version : v 1.30

English Version : EN

German Version : DE

French Version : FR



Figure 13

➤ **Defining the Buttons / Keys for the GamePad**

There are 4 buttons / 7 keys on the GamePad:

1. "Up" Arrow Key
2. "Down" Arrow Key
3. "Left" Arrow Key
4. "Right" Arrow Key
5. "Left" Soft Key
6. "Right" Soft Key
7. "Start" Key
8. Button "A"
9. Button "B"
10. Button "C"
11. Button "D"

**Step 1 :**

Select the "GamePad" icon in the Start Menu (Figure 14).



Figure 14

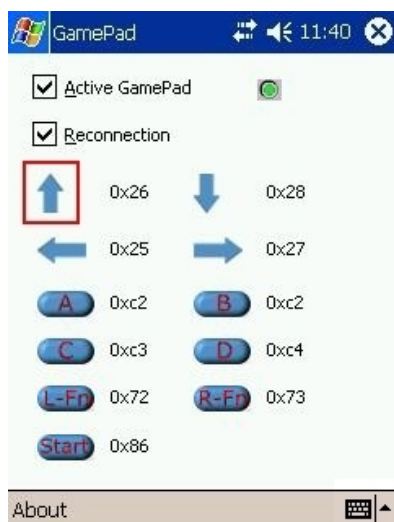


Figure 15

**Step 2 :**

The button / key setting page will then appear.

All 11 buttons / keys are definable and they represent the 11 buttons / keys on the GamePad.

You will use "Up" arrow key as an example for the following button / key setting procedure (Figure 15).

**Step 3 :**

When any of the 11 buttons/keys is selected, an instruction box will appear. You can then use the hardware buttons on the Pocket PC to define any buttons/keys of your choice (Figure 16).



Figure 16

## **Appendices**

---

### **● Appendix 1 : LED**

The light (LED) located on the right wing above the “Start” Key indicates the status of your GamePad

- 1) The LED flashes green and red at the same time for 1 split second when the power of your GamePad has been switched on.
- 2) When the LED flashes a “green” light approximately once every 2 seconds, it is on standby and can be detected by your device.
- 3) When the LED flashes a “green” light approximately twice every 4 seconds, it is connected to your device and is ready for use.
- 4) When the LED flashes a “red” light ONLY, it indicates that the battery needs to be replaced in order to resume normal operation.

● **Appendix 2 : Product & Technical Specifications**

1) Function

Arrow Keys : Up / down / Left / Right (4-way)

Custom Keys : 6 (A, B, C, D, Left and Right)

Start Key : 1

Support System : Symbian S60, Symbian UIQ, PPC, MS Smartphone

Multilingual Support

2) Electronics

Bi-color LED : 1

Battery : 1 \*(1.5V "AAA" battery)

Power on / off switch : 1

Standby Current : 1~10mA, depending on handheld device

Operation Current : 2~50mA, depending on handheld device

Standby Time : 39/H, "Disconnected" and power on  
9/H, "Connected" and ready for use

Operation Time : 3.5/H, functioning continuously

3) Mechanics

Dimensions Closed : 145 mm x 44 mm x 30.5 mm

Dimensions Open : 145 mm x 127.3 mm x 30.5 mm

Weight (including 1.5V\*1) : 130.2 g

4) Operating Environment

Operating Temperature Range : -10~50°C (Humidity 5~90%RH)

Storage Temperature Range : -30~70°C (Humidity 5~90%RH)

Relative Humidity : 95% at 65°C

ESD Humidity :  $\pm 8$ KV

● **Appendix 3 : Troubleshooting**

**1. Verifying the version of the operating system for my Pocket PC :**

- ✧ Tap "Start→ Setting → About".
- ✧ The version of the Pocket PC OS software is shown here.

**2. Having problem installing the GamePad driver on my Pocket PC :**

- ✧ Please make sure that the connection cable is connected between the PC and your Pocket PC device.
- ✧ Find Microsoft "ActiveSync" software on your system tray.
- ✧ Click "Start→ ActiveSync" on your Pocket PC.
- ✧ Synchronizing your device and PC to ensure secure connection.
- ✧ Follow your "BPG100 Bluetooth GamePad" User's Manual for re-installation.

**3. Why do the games lag from time to time ?**

- ✧ Due to insufficient memory on your device, the games may lag from time to time. If this happens, please reset your Pocket PC / Pocket PC phone.