



Manufacturer's Disclaimer Statement

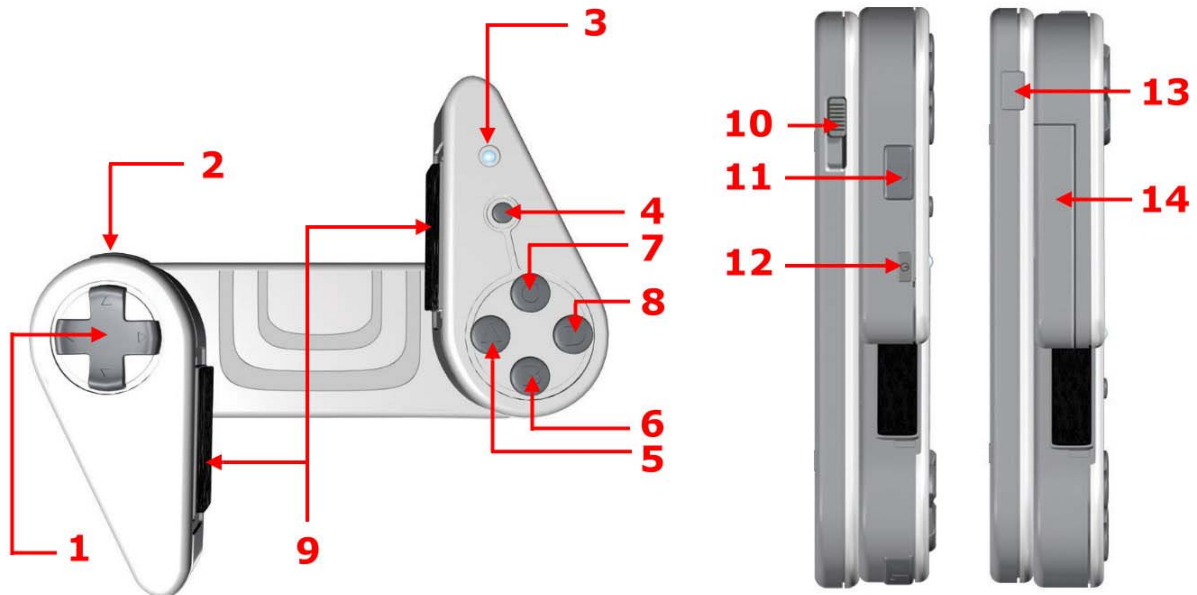
The information in this document is subject to change without notice and does not represent a commitment on the part of the vendor. No warranty or representation, either expressed or implied, is made with respect to the quality, accuracy or fitness for any particular purpose of this document. The manufacturer reserves the right to make changes to the content of this document and/or the products associated with it at any time without obligation to notify any person or organization of such changes. In no event will the manufacturer be liable for direct, indirect, special, incidental or consequential damages arising out of the use or inability to use this product or documentation, even if advised of the possibility of such damages. This document contains materials protected by copyright. All rights are reserved. No part of this manual may be reproduced or transmitted in any form, by any means or for any purpose without expressed written consent of its authors. Product names appearing in this document are mentioned for identification purchases only. All trademarks, product names or brand names appearing in this document are registered property of their respective owner.

Table of Contents

Manufacturer's Disclaimer Statement	2
Introducing BGP100 Bluetooth GamePad.....	4
➤ GamePad Features	4
➤ GamePad Set Up	5-6
GamePad Driver Installation	7
➤ Before Use	7
➤ System Requirements	7
➤ Installing / Uninstalling / Upgrading the GamePad Driver.....	7
➤ Installation.....	7
➤ Installing the Application in Nokia 7710 by Auto Run CD-ROM.....	7
➤ Installing the Application in Nokia 7710 by "Application Installer" of PC Suite.....	8
➤ Installing the Application in Nokia 7710 using Bluetooth File Transfer.....	9
➤ Uninstalling the GamePad Driver.....	10
➤ Upgrading the GamePad Driver.....	10
Configuring BGP100 Bluetooth GamePad	11
The "Config" Page	12
➤ Active GamePad	12-13
➤ Reconnection	13
➤ Power Saving Mode	13
➤ The "About" Page	14
➤ Defining the Buttons / Keys for the GamePad.....	15-16
Appendices	17
➤ Appendix 1 : LED.....	17
➤ Appendix 2 : Product & Technical Specifications	18
➤ Appendix 3 : Troubleshooting.....	19

Introducing BGP100 Bluetooth GamePad

- **GamePad Features**



1. Up / Down / Left / Right Arrow Keys
2. "L" Key
3. LED
4. "Start" Key
5. Button "A"
6. Button "B"
7. Button "C"
8. Button "D"
9. Adjustable Rubber Strips

10. GamePad Lock
11. "R" Key
12. Power Switch
13. Adjustable Button
14. Battery Cover

● GamePad Set Up

Step 1 :

Turn on the power switch located on the right boarder of the right wing (above the "R" key).

Check the status of LED :
it will flash red and green at the
same time for 1 split second and
this indicates "power on"
(Figure 1).

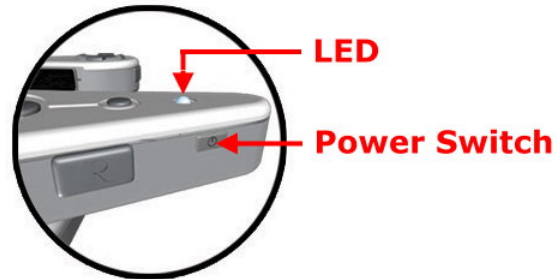


Figure 1

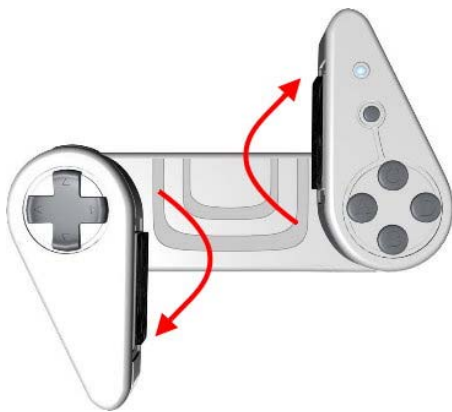


Figure 2

Step 2 :

Move the left wing downward or right wing upward until the GamePad locks itself (Figure 2).

Step 3 :

Place your Smartphone at the centre of the GamePad. The rubber strips (located on the left and right inner edges of the left and right wings) can be adjusted to avoid any buttons/keys located on either side of the device (Figure 3).

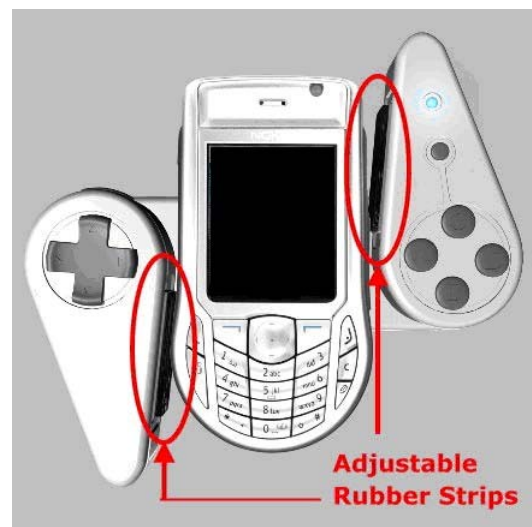


Figure 3

Step 4 :

Press the button located on the bottom left edge of the GamePad.

This button will adjust the left and right wings to help best fit your device on the GamePad (Figure 4).

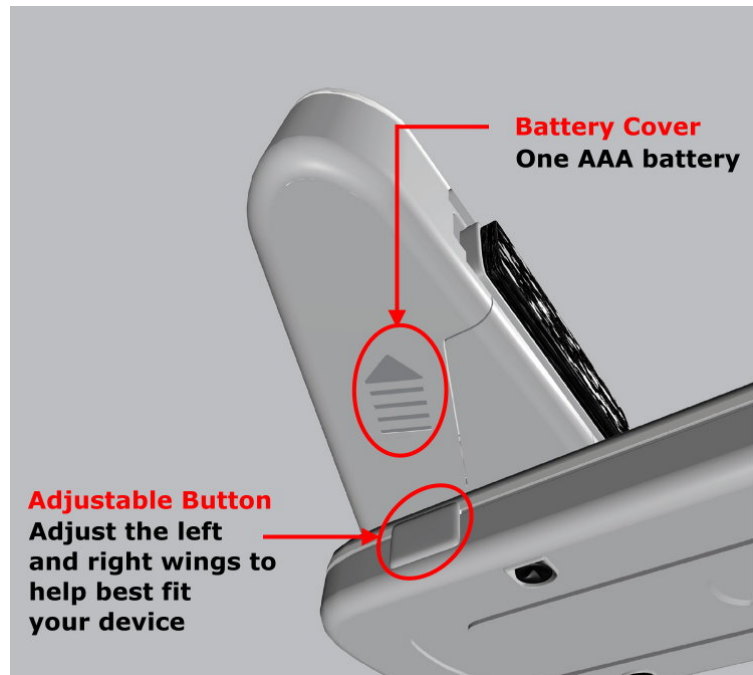


Figure 4

Step 5 :

Lastly, push the button located on the top right edge to the left.

This mechanism will further secure your device and prevent it from falling off the GamePad (Figure 5).

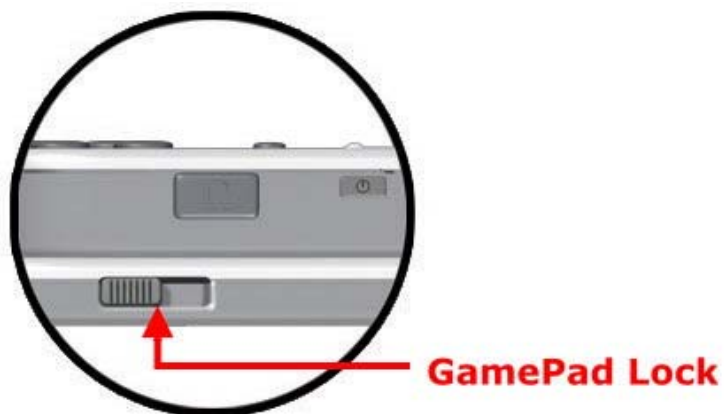


Figure 5

GamePad Driver Installation

● **Before Use**

- ✧ Check the battery status of your GamePad - when power is on, the LED will flash green and red at the same time for 1 split second.
- ✧ Disable or remove other previously installed applications which will require the use of Bluetooth on your Smartphone

● **System Requirements**

- ✧ Nokia 7710
- ✧ A minimum of 100KB memory on your Smartphone
- ✧ PCs with Microsoft Windows 2000 / XP operating systems
- ✧ PC suite (available on one of the CDs delivered with your phone)

● **Installing / Uninstalling / Upgrading the GamePad Driver**

Installation

The driver can be installed by AutoRun CD-ROM, PC Suite, Cable or Wireless file transfer (Bluetooth) for Nokia 7710.

(Please note: When the file is transferred to your Nokia 7710, a message with file "GamePad" will be shown on the screen. Click "View". A warning message will appear: "The identity of the software supplier cannot be guaranteed. Do you want to proceed? Click "Yes", then click "Install").

➤ **Installing the Application in Nokia 7710 by AutoRun CD-ROM**

1. Make sure that a connection between your PC and Smartphone is established.
2. Insert the GamePad CD into the CD-ROM drive of your PC.
3. Follow the instructions on screen to complete installation.
4. When installation is complete, a GamePad icon can be found under the Menu section of your Smartphone device.

➤ **Installing the Application in Nokia 7710 by “Application Installer” of PC Suite**

1. Select PC Suite on your PC screen, then click “Install applications” icon (Figure 6).



Figure 6

2. In the application installer, see “My Computer”- Path: CD-Rom driver >> Files >> Nokia7710 >> Language (Figure 7).

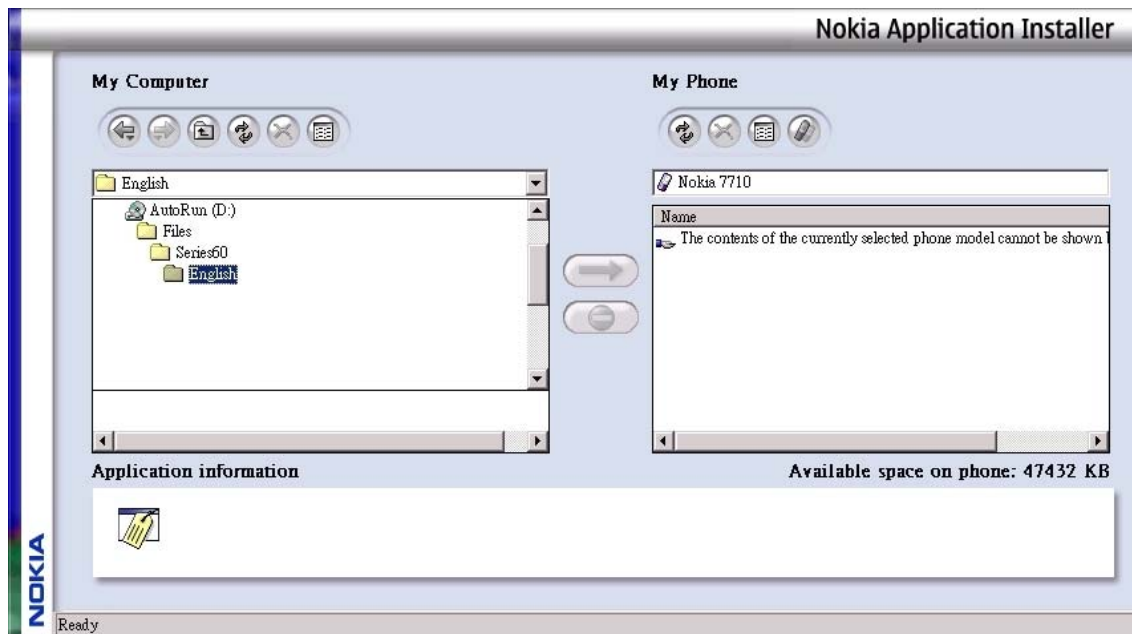


Figure 7

3. Select file “GamePad.sis” to complete installation.

➤ **Installing the Application in Nokia 7710 using Bluetooth File Transfer**

1. Disable any application or driver which will require the use of Bluetooth on your Smartphone.
 2. Path: CD-Rom driver >> Files >> Nokia7710 >> Language. Select the file "GamePad.sis" on your PC.
 3. Follow the instructions for the Bluetooth software on your PC to locate your Nokia 7710, and then transfer the file to your Smartphone device.
- * When the driver is installed successfully, the GamePad driver icon will appear in the Main Menu (Figure 8).



Figure 8

Uninstalling the GamePad Driver

Step 1 : Find **Control Panel** from “Applications View”.

Step 2 : Select **App. manager** from the “Device” tab.

A list of applications which can be uninstalled is shown here.

Step 3 : Select the application to uninstall.

Step 4 : Select **Remove** (Figure 9).

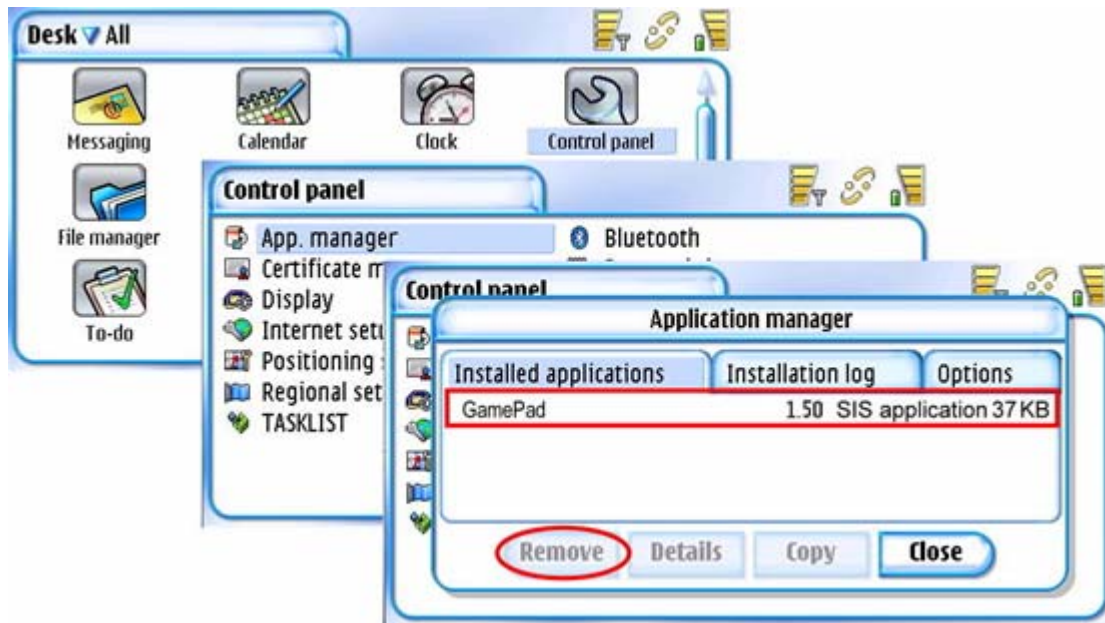


Figure 9

Upgrading the GamePad Driver

Please check the agent's website regularly for any new driver release
(Note : The current driver **MUST** be removed **BEFORE** installing a new driver on your Smartphone device).

Configuring BGP100 Bluetooth GamePad

- When you click on the “GamePad” icon, the “Config” page will appear (Figure 10).

To view the “Set Keys/About” page, select the “Set Keys /About” tab.

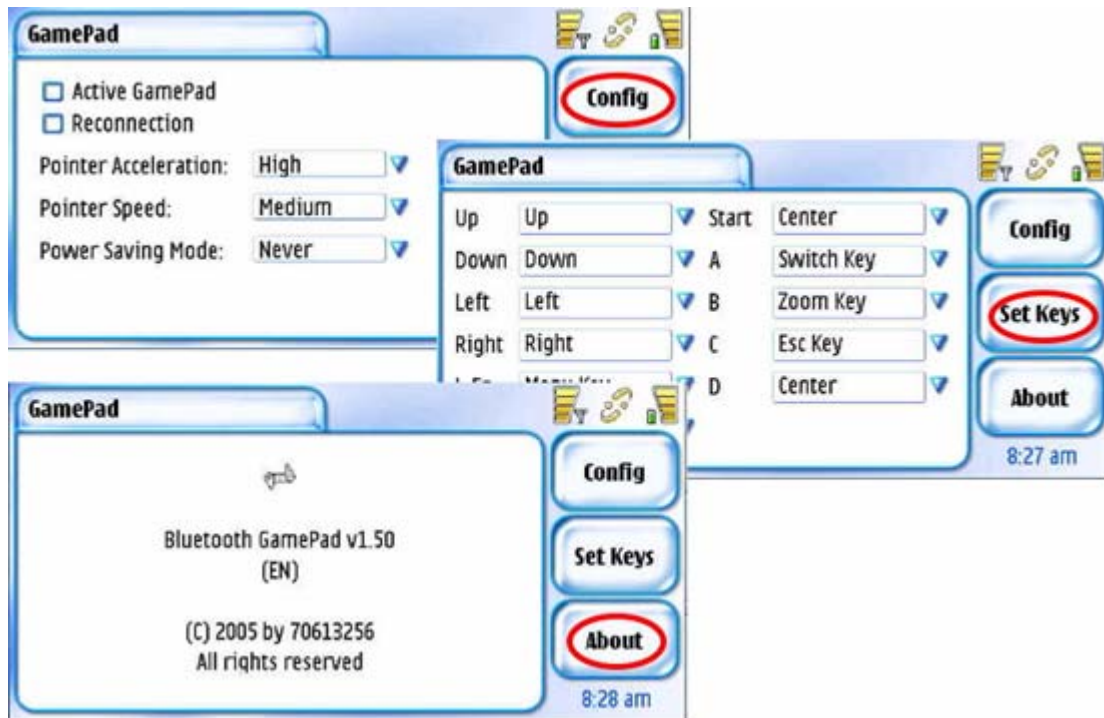


Figure 10

The “Config” Page

➤ **Active GamePad**

- How to connect the GamePad with your Smartphone ?

Step 1 :

Turn on the GamePad power switch. The LED will flash green and red at the same time for 1 split second. When the LED flashes a “green” light once every 2 seconds, it is on standby and can be detected by your Smartphone device.

Step 2 :

Select “GamePad” icon in the application list of your Smartphone (Figure 11).



Figure 11

Step 3 :

Select “on” for “Active GamePad” to scan the GamePad. A link will be established automatically (Figure 12).

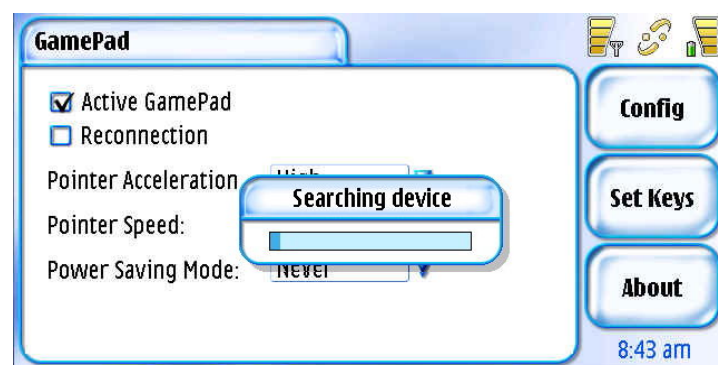


Figure 12

Step 4 :

When a connection is established successfully, you will find a Bluetooth icon on your Smartphone. The LED will then flash a “green” light twice every 4 seconds.

➤ **Reconnection**

When a connection is established successfully, “Reconnection” can then be activated. This function allows the GamePad to memorize the last connected device in order to speed up the process for future connection (Note: Please do not use “Reconnection” unless an initial connection has been established previously) (Figure 13).

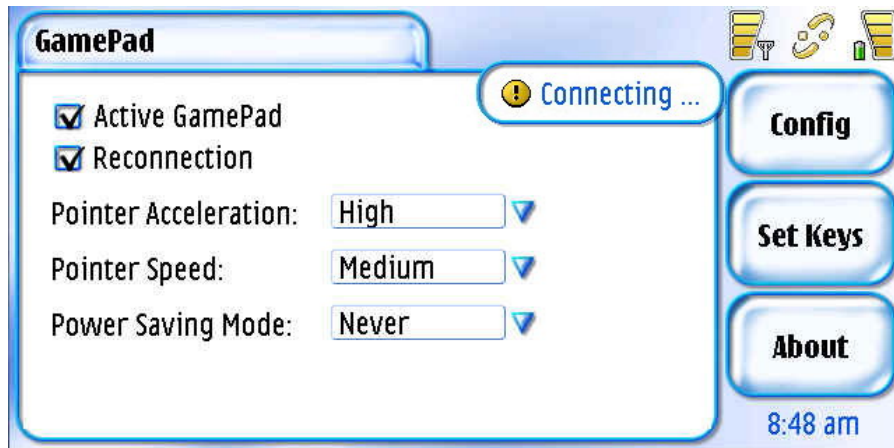


Figure 13

➤ **Power Saving Mode**

This option allows your GamePad to save power during the “idle” period (Figure 14).

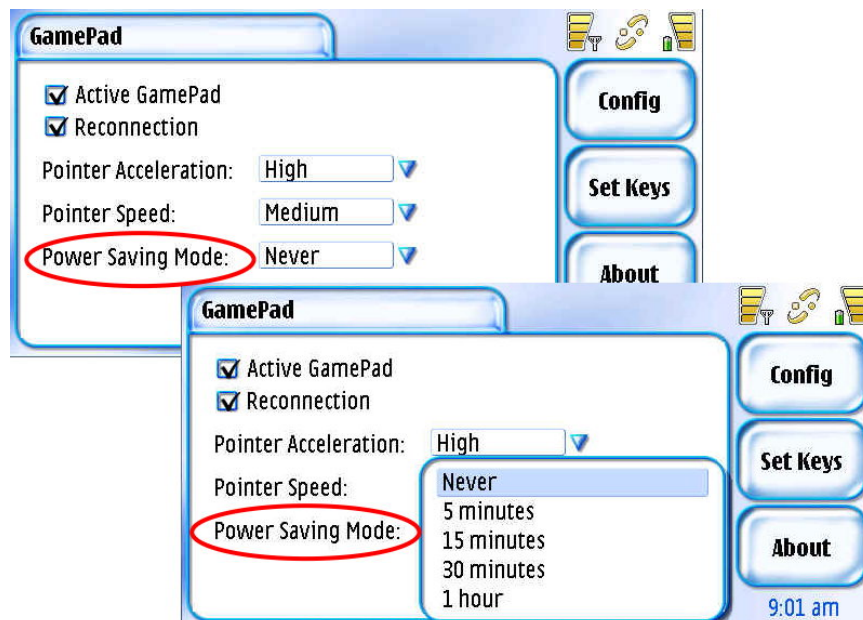


Figure 14

➤ **The “About” Page**

How to check the GamePad driver version which you are using?

Please click the “About” page (Figure 15)

Driver Version: v 1.50

English Version: EN

Traditional Chinese Version: TW

Simplified Chinese Version: CN

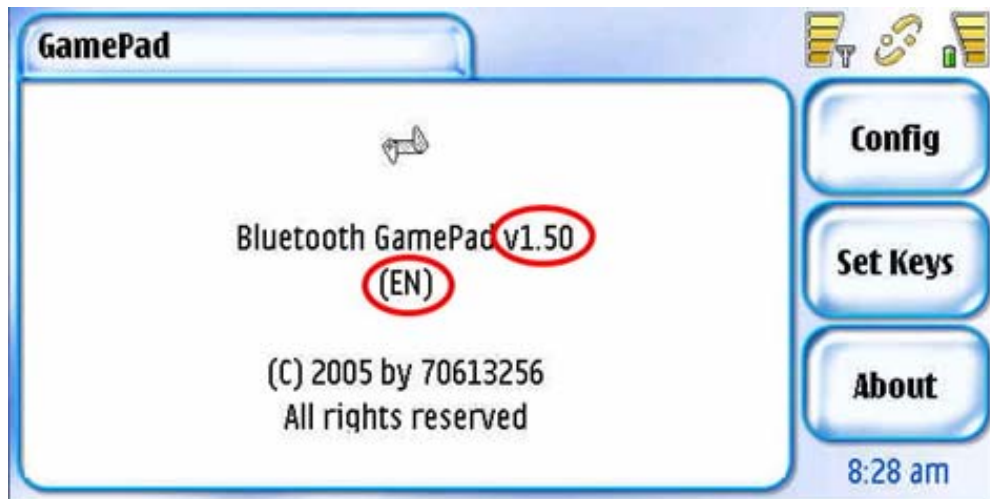


Figure 15

➤ **Defining the Buttons / Keys for the GamePad**

There are 4 buttons and 7 keys on the GamePad:

1. "Up" Arrow Key
2. "Down" Arrow Key
3. "Left" Arrow Key
4. "Right" Arrow Key
5. "Left" Soft Key
6. "Right" Soft Key
7. "Start" Key
8. Button "A"
9. Button "B"
10. Button "C"
11. Button "D"

The 11 buttons / keys above can all be defined as the following list of selected keys on your Smartphone device :

Step 1 :

Select "**GamePad**" from the application list. You can then tap on "Pointer Speed" and "Pointer Acceleration" to set to your preferred options (Figure 16).

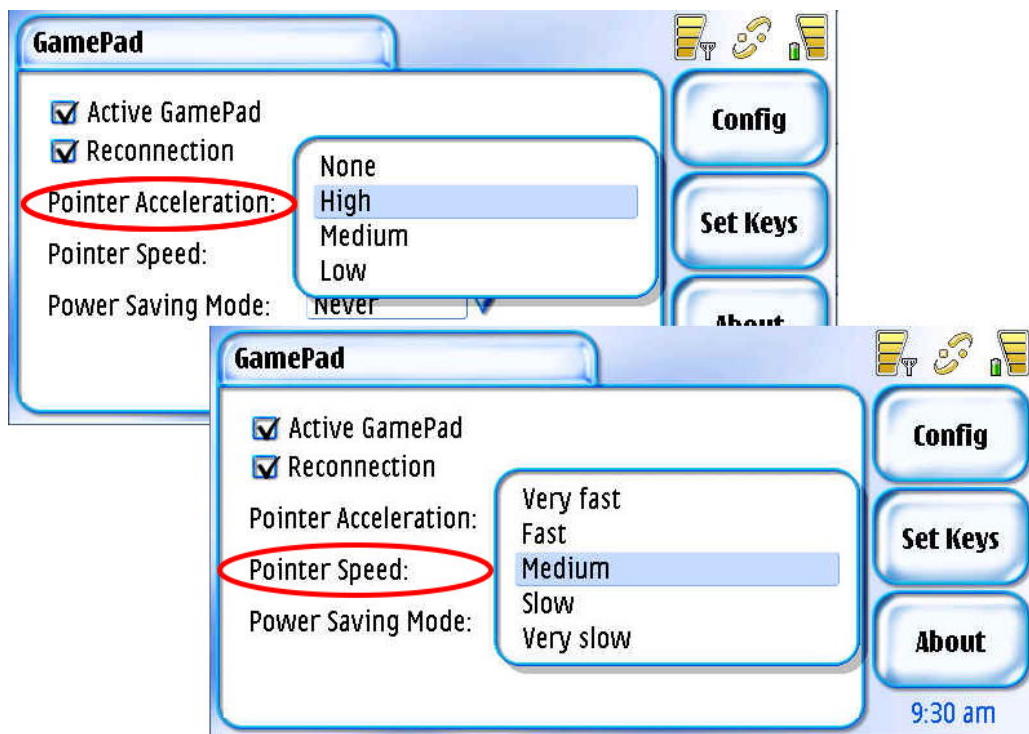


Figure 16

Step 2 :

Select the "Set Keys" tab and you will be able to start defining the 11 buttons / keys on the GamePad (Figure 17).



Figure 17

Appendices

● Appendix 1 : LED

The light (LED) located on the right wing above the "Start" Key indicates the status of your GamePad.

- 1) The LED flashes green and red at the same time for 1 split second when the power of your GamePad has been switched on.
- 2) When the LED flashes a "green" light approximately once every 2 seconds, it is on standby and can be detected by your Smartphone device.
- 3) When the LED flashes a "green" light approximately twice every 4 seconds, it is connected with your Smartphone device and is ready for use.
- 4) When the LED flashes a "red" light ONLY, it indicates that the battery needs to be replaced in order to resume normal operation.

● **Appendix 2 : Product & Technical Specifications**

1) Function

Arrow Keys : Up / down / Left / Right (4-way)

Custom Buttons : 6 (A, B, C, D, Left and Right)

Start Key : 1

Multilingual Support

2) Electronics

Bi-color LED : 1

Battery : 1 (1.5V "AAA" battery)

Power on/off switch : 1

Standby Current : 1~10mA, depending on handheld device

Operation Current : 2~50mA, depending on handheld device

Standby Time : 39/H, "Disconnected" and power on
9/H, "Connected" and ready for use

Operation Time : 3.5/H functioning continuously

3) Mechanics

Dimensions Closed : 145mm x 44mm x 30.5mm

Dimensions Open : 145mm x 127.32mm x 30.5mm

Weight (including 1.5V*1) : 130.2g

4) Operating Environment

Operating Temperature Range : -10~50°C (Humidity 5~90%RH)

Storage Temperature Range : -30~70°C (Humidity 5~90%RH)

Relative Humidity : 95% at 65°C

ESD Immunity : ±8KV

● **Appendix 3 : Troubleshooting**

1. My Smartphone has no response when it is connected with the GamePad.
 - ✧ Check the status of the LED to see if the GamePad is properly connected to your device or if the battery needs to be replaced.
 - ✧ Your Smartphone battery may need to be recharged.
2. Can I store the GamePad driver on my storage card ?
 - ✧ Yes.
3. I have difficulty removing the GamePad driver from my device.
 - ✧ Please check if the GamePad is in link mode. If it is, please close the application from your device and try again.
4. Why do the games lag from time to time ?
 - ✧ Due to insufficient memory on your device, the games may lag from time to time. If this happens, turn off your Smartphone and turn it back on again.