

# **BGP100 Bluetooth GamePad**

## **Quick Install Guide**



# **GAMEPAD**

## **BGP100 Bluetooth GamePad Quick Install Guide**

This application will build up an interaction between your mobile device and the GamePad.

Please refer to the following instructions for a step-by-step guide on application installation.

### ***Installing the GamePad application in Pocket PC / Microsoft Smartphone via Autorun CD-ROM.***

1. Connect your Pocket PC/Microsoft Smartphone via Infrared / Cable for ActiveSync with your PC.
2. Insert the GamePad CD into the CD-ROM drive of your PC.
3. Follow the instructions on screen to complete installation.
4. A GamePad icon can be found under the Menu section of the Pocket PC / Microsoft Smartphone when driver installation is complete.

### ***Installing the GamePad application in Symbian Series 60 / UIQ Smartphone via Autorun CD-ROM.***

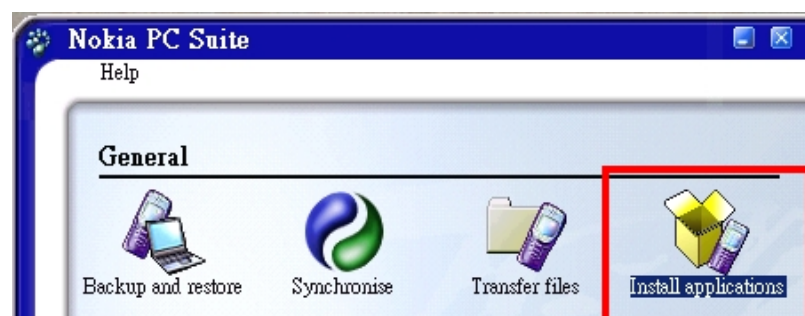
1. Check that a connection between your PC and Smartphone is established.
2. Insert the GamePad CD into the CD-ROM drive of your PC.
3. Follow the instructions on screen to complete installation.
4. When installation is complete, a GamePad icon can be found under the Menu section of your Smartphone device.

### ***Installing the GamePad application in Symbian Series 60 / UIQ Smartphone via Smartphone PC Suite.***

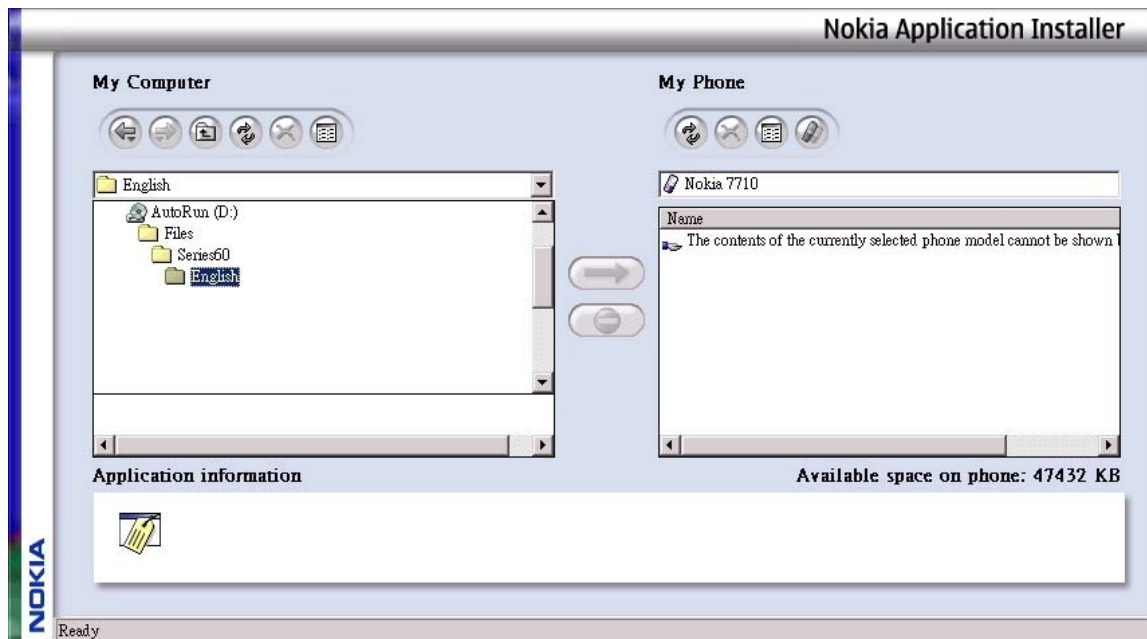
Please Note : Symbian Series 60 / UIQ Smartphones must use its own PC Suite to install the application.

The following illustration is an example of Nokia 7610.

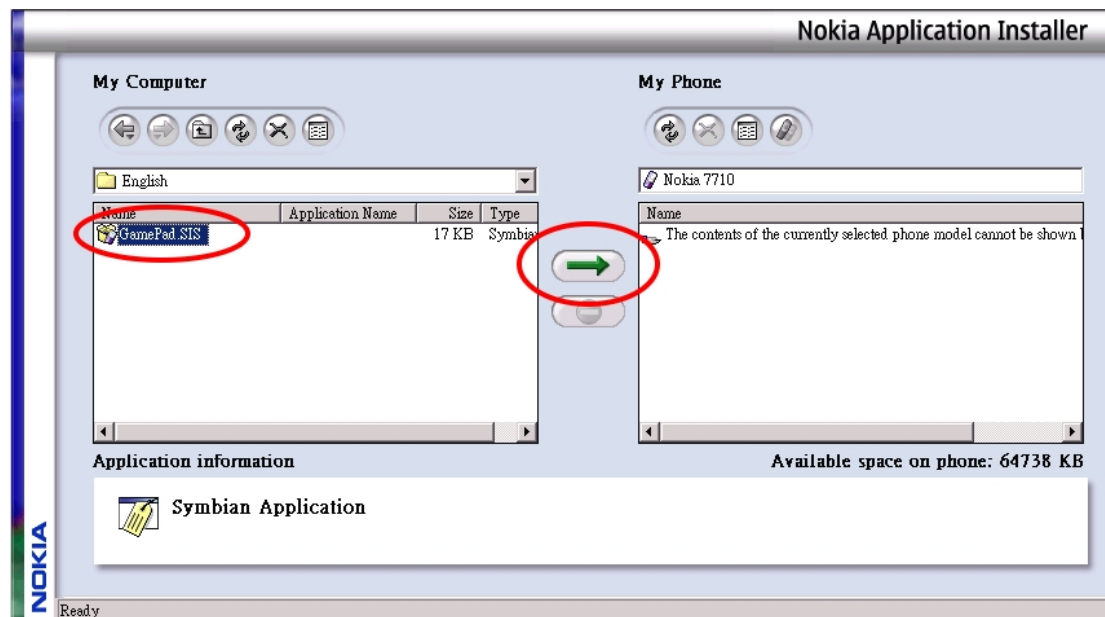
1. Select PC Suite on your PC screen, and then click the “Install applications” icon.



2. In the application installer, see "My Computer"- Path : CD-Rom driver >> Files >> Series 60 / UIQ >> Language.



3. Select the file "GamePad.sis"



4. A Bluetooth GamePad icon can be found under the Menu section of the Smartphone when installation is complete.

### ***Installing the application in Series 60 / UIQ Smartphone by Infrared or Bluetooth File Transfer.***

1. Disable / remove any application / driver which will require the use of Infrared / Bluetooth in your Smartphone.
2. Path : CD-Rom driver >> Files >> Series 60/UIQ >> Language. Select the file "GamePad.sis" on your PC.
3. Follow the instructions for the Infrared or Bluetooth software on your PC to locate the Symbian Series 60 / UIQ Smartphone, and then transfer the file to your Smartphone device.
4. When the driver is installed successfully, a Bluetooth GamePad icon will appear in the Main Menu.

### ***GamePad Configuration***

1. Turn on the GamePad power switch. The LED will flash green and red at the same time for 1 split second.  
When the LED flashes a "green" light once every 2 seconds, it is on standby and can be detected by your Smartphone device.
2. Select "GamePad" icon in the application list of your Smartphone.
3. Select "on" for "Active GamePad" to scan the GamePad. A link will be established automatically.
4. When a connection is established successfully, you will find a Bluetooth icon on your Smartphone.  
The LED will then flash a "green" light twice every 4 seconds.

### ***GamePad Reconnection***

When a connection is established successfully, "Reconnection" can then be activated.

This function allows the GamePad to memorize the last connected device in order to speed up the process for future connection.

(Note : Please do not use "Reconnection" unless an initial connection has been established previously).

**\*\***For more detailed instructions on different mobile devices or troubleshooting, please refer to the electronic User's Manual on the CD-ROM provided.